

2016 ANNUAL REPORT



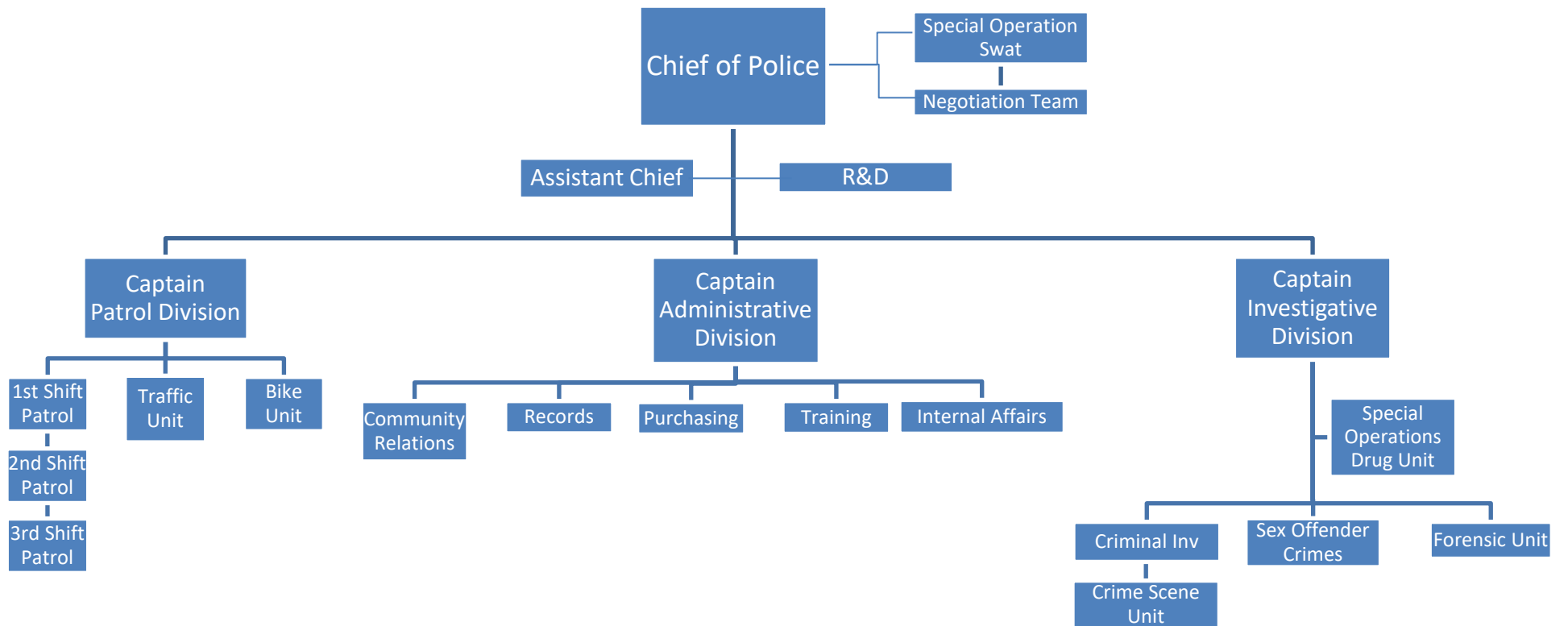
PRATTVILLE POLICE DEPARTMENT

CHIEF MARK THOMPSON

101 West Main Street

Prattville, AL 36067

334-595-0208



**Prattville Police Department Statistics
2007- 2016**

ITEM	2007	2008	2009	2010	2011	2012	2013	2014	2,015	2016
Calls for Service	23,206	23,133	21,652	22,999	24,154	25,414	25,505	26,447	33,266	42,232
Felony Cases (Not including drug cases)	1,580	1,683	1,374	1,351	1,021	1,047	1,366	1,276	1,377	1,502
Juvenile Cases	883	893	757	745	626	505	267	142	160	174
Homicides	2	2	0	1	1	3	3	0	1	2
Traffic Arrest	6,398	6,236	7,914	6,299	6,450	4,362	4,782	4,897	4,235	5,704
Criminal Arrest - Misdemeanor and Felony	3,252	3,288	2,651	3,035	3,208	2,825	2,883	2,757	2,411	2,837
Domestic Violence Cases	484	434	412	522	551	555	528	502	526	466
Street Accidents	948	964	975	1000	901	890	879	1,009	1,049	1,216
Private Property	461	466	479	469	552	510	513	562	534	512
Traffic Fatalities	2	3	3	2	2	4	1	1	0	1
Traffic Injuries	278	188	212	320	203	258	272	285	273	267
Pedestrian Fatalities	0	0	0	0	0	2	0	0	0	0
Pedestrian Injuries	6	3	3	2	1	3	2	0	0	0
Parking Tickets	77	253	143	348	373	259	122	86	54	
Miles Driven	874,995	1,061,990	1,080,882	1,135,481	911,954	828,738	888,855	998,149	830,013	701,047
Gasoline	64,079	76,477	73,327	79,580	67,990	63,666	60,969	76,921	57,121	53,913.00
Officer Assaulted	1	0	3	2	2	1	0	5	2	1
Alarm Calls	2,218	2,623	2,532	2,852	2,858	2,375	2,269	2,532	2,404	2,502
Officer Training Hours	3,370	5,893	10,898	9,686	6,239	5,156	8,534	7,417	10,197	10,258

PRATTVILLE POLICE DEPARTMENT
Monthly Count of Offenses Known to Police
2016

1 Classification of Offenses	2 Offenses Reported	3 Unfounded Complaint	4 Actual Offense C2 - C3	5 Offenses Cleared	6 Juvenile Clearance
1. CRIMINAL HOMICIDE					
a. Murder/Nonneg Mansl (11)	2	0	2	1	0
b. Manslaughter by Negl (12)	0	0	0	0	0
2. FORCIBLE RAPE (20)	15	1	14	12	0
a. Rape by Force (21)	15	1	14	12	0
b. Attempt Forcible Rape (22)	0	0	0	0	0
3. ROBBERY (30)	26	0	26	13	1
a. Firearm (31)	18	0	18	8	1
b. Knife or Cutting Inst. (32)	0	0	0	0	0
c. Other Dangerous Weapon (33)	2	0	2	1	0
d. Hands-Fist-Feet-Etc. (34)	6	0	6	4	0
4. ASSAULT (40)	614	7	607	452	8
a. Firearm (41)	7	0	7	5	0
b. Knife or Cutting Inst. (42)	6	0	6	2	0
c. Other Dangerous Weapon (43)	6	0	6	6	0
d. Hands-Fist-Feet-Etc. (44)	23	0	23	13	0
e. Other Assaults-Simple (45)	572	7	565	426	8
5. BURGLARY (50)	179	6	173	43	1
a. Forcible Entry (51)	94	1	93	22	0
b. Unlawful Entry/No Force (52)	85	5	80	21	1
c. Attempt Forcible Entry (53)	0	0	0	0	0
6. LARCENY - THEFT (60)	1148	23	1125	434	22
7. MOTOR VEHICLE THEFT (70)	72	7	65	25	2
a. Autos (71)	47	5	42	21	2
b. Trucks and Buses (72)	15	0	15	3	0
c. Other Vehicles (73)	10	2	8	1	0
GRAND TOTAL (77)	2056	44	2012	980	34

1 Officer(s) Assaulted
419 Clearance(s) by Adult Arrest
34 Clearance(s) by Juvenile Arrest
1 Arson Cases

PRATTVILLE POLICE DEPARTMENT
2016 Total Offenses Report by Statute

Statute Code	Statute Description	Total
1-8	Failure To Obey Orders Police	48
10-41 CITY	Allowing Dog To Run At Large	4
10-5	Stables required Horses etc.	1
10-9	Corrals in Residential Dist	1
12-15-111	Contribute Delinquency Minor	3
13A-10-15	Terrorist Threats	2
13A-10-2	Obstructing Gov't Operations	4
13A-10-36	Promote Prison Contraband 1st	1
13A-10-37	Promote Prison Contraband 2nd	1
13A-10-39	Failure to Appear/Comply/Pay	1
13A-10-41	Resisting Arrest	12
13A-10-52	Attempt to Elude LE Officer	13
13A-10-52 (C)	Attempt Elude LE Off w injury	1
13A-10-9	False Report to LE Authority	3
13A-11-10	Public Intoxication	100
13A-11-14	Cruelty to Animals	2
13A-11-50	Carrying Concealed Weapons	2
13A-11-53	Brass Knuckles	2
13A-11-64	Alter Firearm ID Number	2
13A-11-7	Disorderly Conduct	27
13A-11-72	Forbidden Possess Pistol School	2
13A-11-73	Carry Pistol w/o License	2
13A-11-8 (A)	Harassment	52
13A-11-8 (B)	Harassing Communications	15
13A-12-121	Prostitution	8
13A-12-130	Public Lewdness	1
13A-12-211	Unl Dist Controlled Sub	22
13A-12-212	Unlaw Poss Contr Substance	61
13A-12-213	Drug-Poss Marijuana 1st	10
13A-12-214	Drug-Poss Marijuana 2nd	160
13A-12-218	Drug-Mfg Cont Sub 1st	3
13A-12-231	Drug-Trafficking	4
13A-12-260	Drug-Poss Paraphernalia	119
13A-13-6	Endangering Welfare of Child	10
13A-4-2 (13A62)	Attempted Murder	2
13A-4-2 (13A83)	Attempted Theft 1st	1
13A-6-131	Domestic Violence 2nd	2
13A-6-132	Domestic Violence 3rd	142
13A-6-138	DV Strangulation/Suffocation	4
13A-6-142	Violation of Protection Order	7
13A-6-143	ARREST FOR VIOLATION DV ORDER	1
13A-6-152	Human Trafficking 1st	3
13A-6-2	Murder	2
13A-6-20	Assault 1st	1
13A-6-20 (4)	Assault First Degree, Police	1
13A-6-21	Assault 2nd	2
13A-6-22	Assault 3rd	10
13A-6-23 DM	Menacing-Domestic Violence	1
13A-6-23 MN	Menacing	9

13A-6-24	Reckless Endangerment	9
13A-6-66	Sexual Abuse First Degree	1
13A-6-68	Indecent Exposure	1
13A-6-90	Stalking	1
13A-7-2	Criminal Trespass 1st	3
13A-7-21	Criminal Mischief 1st. >2500	1
13A-7-22	Criminal Mischief 2nd. >500	6
13A-7-23	Criminal Mischief 3rd. <500	5
13A-7-29	Criminal Littering	1
13A-7-3	Criminal Trespass 2nd	3
13A-7-4	Criminal Trespass 3rd Degree	12
13A-7-7	Burglary Third Degree	23
13A-8-10.3	Theft of Services 3rd <500	2
13A-8-11(B)	W Unl B&E Veh (withTheft)	37
13A-8-17	Receiving Stolen Prop 1st>2500	7
13A-8-18	Receiving Stolen Prop 2nd>500	2
13A-8-18.1	Receiving Stolen Prop 3rd \$500-\$	4
13A-8-19	Receiving Stolen Prop 3rd <500	1
13A-8-19 NEW	Receiving Stolen Prop 4th <\$50	1
13A-8-192	Identity Theft	3
13A-8-22	Obscuring ID of Vehicle	1
13A-8-3	Theft of Property 1st >2500	22
13A-8-4	Theft of Property 2nd >500	20
13A-8-4 NEW	Theft of Property 2nd 1500-250	7
13A-8-4.1	Theft of Property 3rd 500-1499	27
13A-8-41	Robbery 1st Degree	5
13A-8-42	Robbery 2nd Degree	2
13A-8-5	Theft of Property 3rd <500	42
13A-8-5 NEW	Theft of Property 4th <500	190
13A-8-9	Theft of Lost Prop 3rd <\$500	1
13A-9-14	Ill Poss/Use Credit/Debit Card	16
13A-9-14.1	Ill Poss/Use Credit Card	2
13A-9-18.1	Giving False Name to Law Enf	21
13A-9-3.1	Forgery 3rd Degree	23
13A-9-4 NEW	Forgery 4th Degree	1
13A-9-5	Crim Poss of Forged Inst 1st	22
13A-9-6	Crim Poss Forged Inst 2nd	3
13A-9-6.1	Crim Poss Forged Inst 3rd	4
15-20A-10	Sex Offndr-Res Restrictions	2
15-20A-11	Sex Offndr-Prohibited Residence	1
15-20A-18	Sex Offndr-ID Requirements	1
15-20A-18 (A)	Sex Offender- ID Requirements	1
15-22-54	Probation Violation	2
28-3A-25(19)	Illegal Poss of Alcohol	12
32-10-2(F)	Felony Leaving Scene/TA	1
32-5A-154	Passing School Bus	1
32-5A-191(A) (3)	DUI (Controlled Substance)	6
32-5A-191(A) (4)	DUI (Alcohol & Cont Sub)	5
32-5A-191(A) (5)	DUI (Any Impairing Sub)	9
32-5A-191(A) 1	DUI (8% Or More Alcohol)	2
32-5A-191(A) 2	DUI (Alcohol)	82
32-5A-191.4	Ignition Interlock Violation	1
32-5A-193	Attempting to Elude Police	1
32-5A-32	Running Red Light	3

32-5A-350	Texting While Driving	1
32-5A-80	Driving Wrong Side of Road/Hwy	1
32-5A-88	Improper Lane Usage	3
32-5B-4	Failure to Wear Seat Belt	1
32-6-19	Suspended/Revoked License	2
32-6-219	Expired Temporary Tag	1
32-6-61	Failure to Register Vehicle	1
32-7-01	No Liability Insurance	1
32-7A-16	No Insurance/Imp Registration	1
32-7A-16(A) (1)	Operate Vehicle w/o Insurance	3
32-7A-4	Operate Vehicle w/o Insurance	1
34-23-7	Illegal Poss Prescription Drug	30
46-101	Leaving NonOperating Vehicle o	2
46-3	Removal of Weeds or Rubbish et	2
46-4	Garbage/Rubbish about Premise	3
46-6	Stagnant Water	2
6-63	No Fence Swimming/Wade Pool	1
ALIAS	Alias Warrant/Failure To Appear	585
Bond Revoked	Bond Revoked	2
CAPIAS	Capias Warrant/Fail to Pay	14
Contempt of Ct.	Contempt of Court	86
Court Order	Court Order	6
Extradition IN		7
Extradition OUT		3
GJ Indictment		8
HOLD	Hold For Other Agency	13
Sec 71 append A		2
WRIT	Writ of Arrest	506

	Total Offenses:	2837

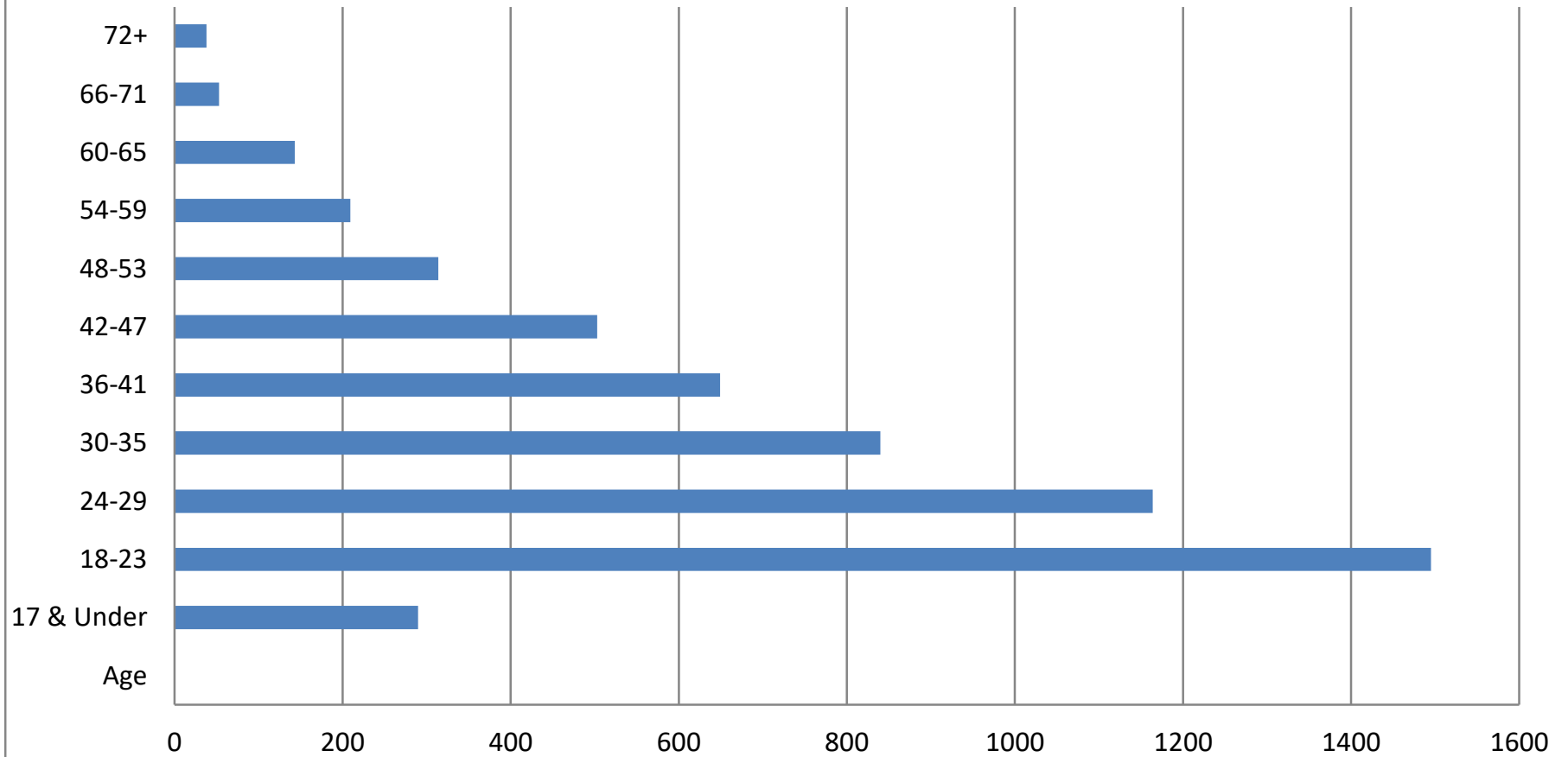
PRATTVILLE POLICE DEPARTMENT
2016 Total Traffic Citation Report by Violation

Violation	Description	Total
32-1-3	Right To Use Hwy Restricted	6
32-10-1 (M)	Misdemeanor Leaving Scene/TA	6
32-5-210	Improper Tires	1
32-5-211	Imp Flag/Lights at end of load	1
32-5-214	Improper Mirrors	1
32-5-215	Obstructed Windshield	4
32-5-216	Improper Muffler	12
32-5-222	No Child Restraint Seat	50
32-5-240	Improper Lights	254
32-5-240 (A) (1)	No Headlights When Raining	3
32-5-240 (C)	Imp Tail Lights-Trailer	3
32-5-240 (C) (3)	Improper Tag Light	137
32-5-241	Imp Auxiliary Lights	3
32-5-241 (B) (2)	Inoperable Brake Lights	4
32-5-242 (C)	No/Imp Tag Light	18
32-5-242 (G)	Imp Light Coloring	3
32-5-310	Improper Equipment	9
32-5-65	Allowing Minor to Drive	2
32-5-76 (A)	Spilling Load or Litter	2
32-5-93	Speeding-Const/Repair Zone	5
32-51-191.4	IGNITION INTERLOCK VIOLATION	1
32-5A-111	Fail To Yield Veh turning left	2
32-5A-112	Failed to Yield Stop Sign	6
32-5A-112 (B)	Fail Stop for Sign or Yield In	38
32-5A-112 (C)	Fail Yield ROW	8
32-5A-114	Veh Entering From Private Road	2
32-5A-115	Blue Light Law	4
32-5A-130	Improper Turn	5
32-5A-131	U Turn	2
32-5A-133	Improper Signal/Turn	15
32-5A-134	Signal by Arm or Signal Lamps	25
32-5A-136	Obstruct Traffic	2
32-5A-136 (A)	Stopping on Highway	4
32-5A-137	Improper Parking	1
32-5A-153	Fail to Stop/Exit Parking Lot	15
32-5A-154	Passing School Bus	2
32-5A-170	Reasonable and Prudent Speed	6
32-5A-171	Speeding	1171
32-5A-172	Posted Speed Limits-Differing	3
32-5A-174	Minimum Speed Regulation	1
32-5A-176.1	Speeding In Construction Zone	2
32-5A-178	Racing on Highway	6
32-5A-182	Speeding in a School Zone	16
32-5A-190	Reckless Driving	11
32-5A-191 (A) (3)	DUI (Controlled Substance)	6
32-5A-191 (A) (4)	DUI (Alcohol & Cont Sub)	5
32-5A-191 (A) (5)	DUI (Any Impairing Sub)	8
32-5A-191 (A) 1	DUI (8% Or More Alcohol)	1
32-5A-191 (A) 2	DUI (Alcohol)	76
32-5A-191 (C) (2)	DUI->=.04% Driving a Commerical Veh	1
32-5A-191.3 (A)	Boating DUI Any Substance	2
32-5A-221	Pedestrian Under the Influence	1
32-5A-31	Obedient Traffic Control Device	10

PRATTVILLE POLICE DEPARTMENT
2016 Total Traffic Citation Report by Violation

Violation	Description	Total
32-5A-32	Running Red Light	56
32-5A-330	Open Container	51
32-5A-350	Texting While Driving	12
32-5A-4	Obedience To Police & Firemen	4
32-5A-52	Driving Upon Sidewalk	1
32-5A-58.2	Move Over Act	17
32-5A-60	Littering Law	2
32-5A-80	Driving Wrong Side of Road/Hwy	10
32-5A-82	Overtaking vehicle on left	1
32-5A-82 (2)	Yield to vehicle pass on left	10
32-5A-83	Improper Pass on Right	3
32-5A-86	No Passing Zone	3
32-5A-88	Improper Lane Usage	79
32-5A-89	Following Too Closely	8
32-5A-90	Cross Divided Highway	1
32-5B-4	Failure to Wear Seat Belt	244
32-5C-2	Prohibitions of Window Tint	9
32-6-1	No Drivers License	197
32-6-12 (D)	Drivers License Restriction	7
32-6-19	Suspended/Revoked License	811
32-6-51	No Tag Visible	31
32-6-52	Improper Tag	12
32-6-61	Failure to Register Vehicle	97
32-6-65	Improper State Tag, Decal, etc	565
32-6-7.2	Drivers License age restrict	1
32-6-8	Learners License	3
32-6-9	License not on person	62
32-7-01	No Liability Insurance	1
32-7A-15	Insurance Card Fraud	1
32-7A-16	No Insurance/Imp Registration	571
32-7A-16 (B) (1)	Fail/Refuse Display Insurance	710
32-7A-4	Operate Vehicle w/o Insurance	5
32-7A-6	No Evidence of Insurance	5
32-8-86	Switched Tag	99
40-12-252	No Tag on utility trailer	5
49CFR 392.4 (A)	DRIVER USES OR POSSESSION OF DRUGS	1
49CFR 396.9 (C) (2)	OPERATING AN OUR OF SERVICE VEHICLE	1
62-116	Prohibited Truck Routes	3
62-56	U-Turn	1
62-59	Digging Out	2
62-60	Electronic Messaging while Driving	20
-----		TOTAL 5704
-----		-----

PRATTVILLE POLICE DEPARTMENT CITATIONS BY AGE 2016



	Age	17 & Under	18-23	24-29	30-35	36-41	42-47	48-53	54-59	60-65	66-71	72+
■ Series1		290	1495	1164	840	649	503	314	209	143	53	38

PRATTVILLE POLICE DEPARTMENT
Total Accidents Report by Primary Cause
2016

Primary Cause	Total Accidents
-----	-----
Aggressive Operation	7
Cargo Fell or Load Shift	2
Crossed Centerline	4
DRIVER CONDITION	2
DRIVER NOT IN CONTROL	9
DUI	18
Defective Equipment	7
Distracted by Fallen Object	3
Distracted by Passenger	15
Driving Too Fast For Condition	10
FTY ROW At Uncntrld Intersection	6
FTY ROW From Driveway	36
FTY ROW From Parked Position	6
FTY ROW From Stop Sign	109
FTY ROW From Traffic Signal	47
FTY ROW From Yield Sign	15
FTY ROW Making Left/U-Turn	45
FTY ROW Making R Turn On Red	1
FTY ROW Making Right Turn	7
FTY ROW-Othr FTY (Explain)	17
Fatigued/Asleep	8
Followed Too Close	120
Improper Backing	327
Improper Lane Change/Use	73
Improper Load, Size	3
Improper Passing	6
MADE IMPROPER TURN	1
Made Improper Turn	109
Misjudge Stopping Distance	61
Not Applicable	157
Other	96
Other Distraction Inside Vehic	48
Other Distraction Outside Veh	109
Other Improper Action(Explain)	34
Other-No Improper Driving	3
Over Correct/Over Steering	8
Over Speed Limit	2
Pedestrian Not Visible	1
Ran Off Road	13
Ran Stop Sign	4
Ran Traffic Signal	16
Swerved To Avoid Animal	5
Swerved To Avoid Vehicle	10
Traveling Wrong Way/Wrong Side	7
Unknown	112
Unseen Object/Person/Vehicle	12
Use of Electronic Comm Device	11
Use of Other Electronic Device	3
Vision Obstructed	3

Total accidents: 1728

PRATTVILLE POLICE DEPARTMENT

MISSION: To work in partnership with the community to protect life and property, solve neighborhood problems and enhance the quality of life for the citizens of Prattville with the very best in law enforcement protection and crime prevention. The Prattville Police Department is striving to strengthen our community by taking a leadership role in promoting excellence in character for each citizen by establishing caring neighbors, positive media, reliable law enforcement and safer street and homes.

PROGRAMS offered by the department:

- School Relation Officers for local schools
- Computer Forensics Unit to investigate computer crimes
- Sex Offender Registration and Community Notification
- Specially trained Tactical Response Team
- Domestic Violence Coordinator
- Car Take Home Program with 35 marked vehicles placed in our service area
- Civilian Firearms Familiarization Course
- Stuffed Animal Program to provide stuffed animals for traumatized children
- Uniformed Bicycle Patrol Officers to prevent crime and for public relations
- Neighborhood Intervention Program (NIP)-a prevention and visitation program by officers into neighborhoods.

PRESENTATIONS and DEMONSTRATIONS by:

K-9	Drug Enforcement Unit	Special Operations Team
Motorcycle Units	Patrol Units	Drug Seized Vehicles
Youth Aid	Computer Forensics Unit	

Other Activities include:

School Crossing Guards – Police Department and City Hall tours – Escorts for funerals and parades – Security and traffic control for sporting events and downtown functions – City Fest, Spinners, churches, and other fundraising runs.

Participates in:

Drug Drop Off Program, National Night Out, Drive Sober or Get Pulled Over, Yellow Dot Program, Safety Town Program for the Kindergarten students, Halloween Safety in Private and Public schools, Crime Prevention, Prattville High School Cooperative Student Program and School Career Day, speak at the request of local churches, schools or clubs on various topics, Child Identification Program, Click It or Ticket, Buckle Up America, DUI Saturations programs, Pass and the Drugs Education Advisory Board

Website: prattvillepublicsafety.com



2016 DRUG ENFORCEMENT CASE STATISTICS



Off. Code	Offense	2013	2014	2015	2016
10	Unlawful Dist. / Poss. with Intent, Cocaine	21	19	15	0
11	Unlawful Dist. / Poss. with Intent, Marijuana	18	28	11	12
12	Unlawful Dist. / Poss. with Intent, Methamphetamine	14	13	21	19
13	Unlawful Dist. / Poss. with Intent, Controlled Medication	6	10	20	9
14	Unlawful Dist. / Poss. with Intent, Synthetic Marijuana	0	0	4	5
15	Unlawful Dist. / Poss. with Intent, GHB	0	0	0	0
16	Unlawful Dist. / Poss. with Intent, Heroin	0	0	0	3
17	Unlawful Dist. / Poss. with Intent, Synthetic Controlled Subst. / Other	0	0	0	0
18	Dist. of a Controlled Subst. 18 or older to under 18	0	1	0	0
19	Dist. / Poss. Of an Imitation Cont. Subst.	5	0	2	2
20	Unlawful Poss. of a Controlled Subst., Cocaine	10	8	8	14
21	Unlawful Poss. of a Controlled Subst., Marijuana 1st	23	17	24	25
22	Unlawful Poss. Of a Controlled Subst., Marijuana 2nd	150	213	183	253
23	Unlawful Poss. of a Cont. Subst., Methamphetamine	26	44	45	79
24	Unlawful Poss. of a Cont. Subst., Controlled Medication	115	110	41	57
25	Unlawful Poss. of a Cont. Subst., Synthetic Marijuana	0	24	35	14
26	Unlawful Poss. of a Cont. Subst., GHB / Heroin	0	2	4	5
27	Unlawful Poss. of a Cont. Subst., Synthetic Controlled Subst. / Other	9	13	3	7
28	Chemical Endangerment of a Child	2	7	6	0
29	Diversion Inv. /General Drug Inv. (i.e. Trash Run)	0	0	0	1
30	Trafficking in Cocaine	1	3	3	0
31	Trafficking in Marijuana	0	0	0	0
32	Trafficking In Methamphetamine	0	0	4	3
33	Trafficking in Cont. Medication	0	0	3	1
34	Trafficking in Synthetic Marijuana	0	0	0	3
35	Trafficking in GHB	0	0	0	0
36	Trafficking in Heroin	0	0	0	2



2016 DRUG ENFORCEMENT CASE STATISTICS



37	Trafficking in Synthetic Cont. Subst., / Other	0	0	0	0
38	Unlawful Manufacture of a Cont. Subst. (Clan Lab)	0	0	0	12
39	Unlawful Manufacture of a Cont. Subst. (Other)	4	15	1	0
40	Possession of Drug Paraphernalia (Misdemeanor)	113	157	153	252
41	Possession of Drug Paraphernalia (Felony)	0	0	0	0
42	Criminal Solicitation to Commit Cont. Subst. Crime	0	0	0	0
43	Attempt to Commit a Cont. Subst. Crime	10	3	4	3
44	Criminal Conspiracy to Commit Cont. Subst. Crime	0	0	0	0
45	Theft of Property 1st	0	0	0	0
46	Theft of Property 2nd	46	31	43	25
47	Theft of Property 3rd	1	0	0	1
48	Robbery 1st, 2nd, 3rd	0	0	0	0
49	Receiving Stolen Property	0	0	0	1
50	Prostitution	0	0	0	3
51	Found Property	20	34	21	41
52	Drug Amnesty Program	3	4	3	3
53	Poss. of Firearm / Certain Persons Forbidden	1	4	10	4
54	Loitering	7	6	0	0
55	Agency Assist	25	13	28	4
56	Ill. Poss. Of Non-Controlled Prescription Medication	0	0	20	39
57	Medication from Criminal Inv. (Death, Overdose, etc.)	19	54	60	9
58	Other	3	0	6	26
TOTAL CASES:		652	833	781	937

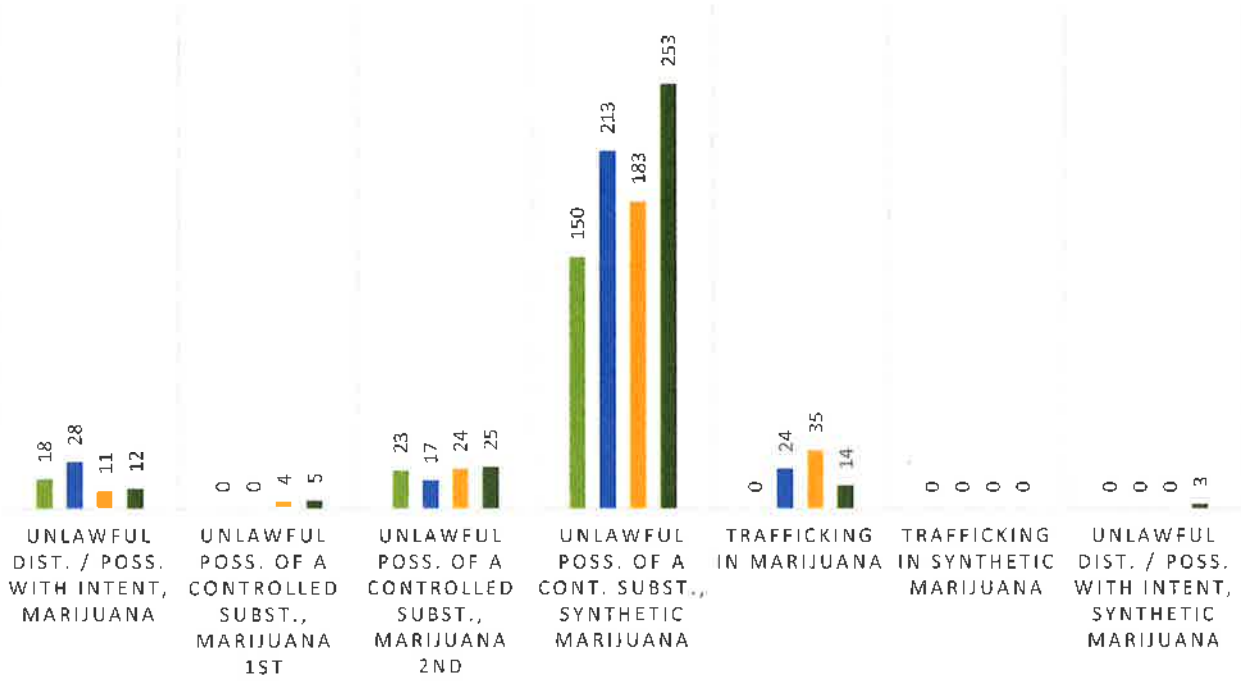


2016 DRUG ENFORCEMENT CASE STATISTICS



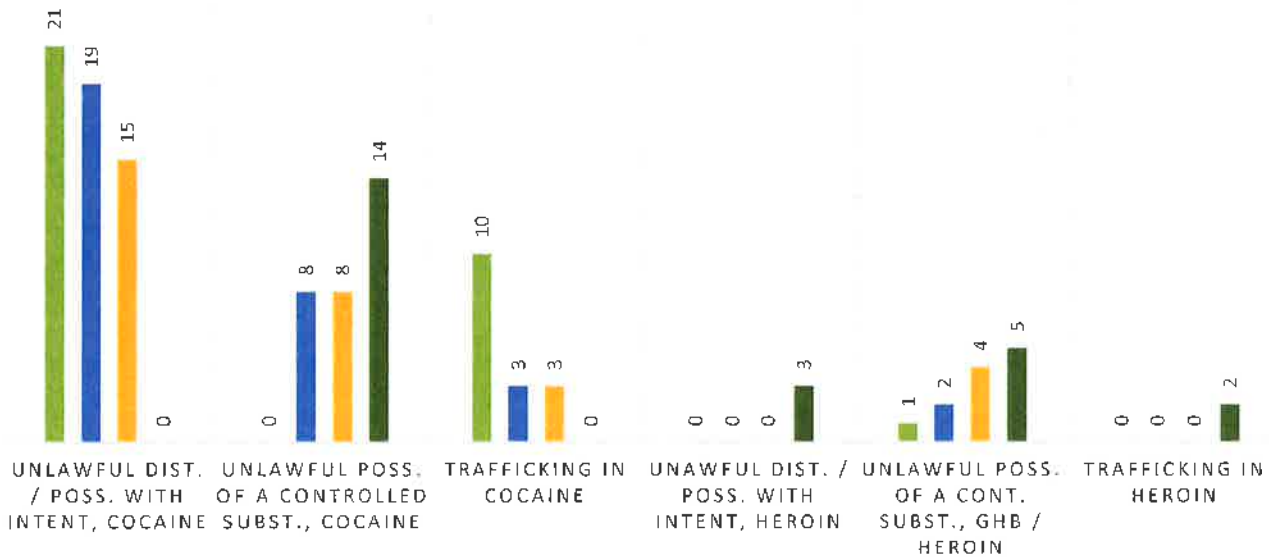
MARIJUANA

2013 2014 2015 2016



COCAINE AND HEROIN

2013 2014 2015 2016



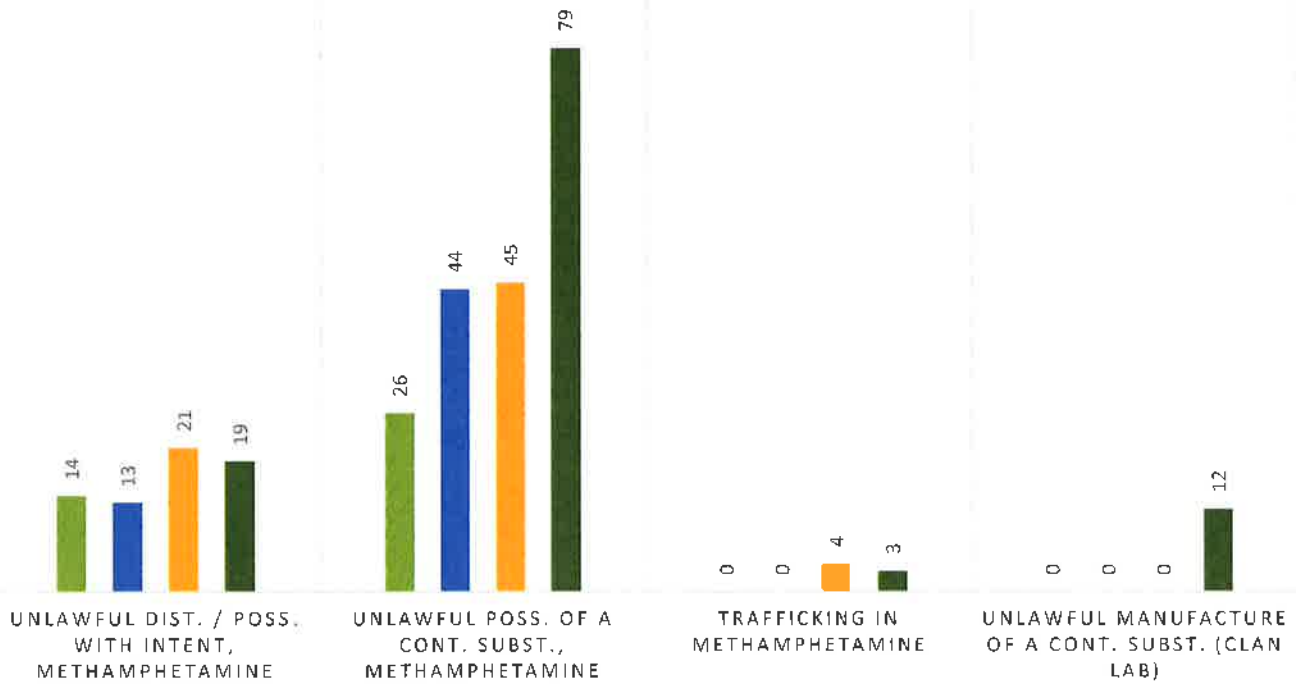


2016 DRUG ENFORCEMENT CASE STATISTICS



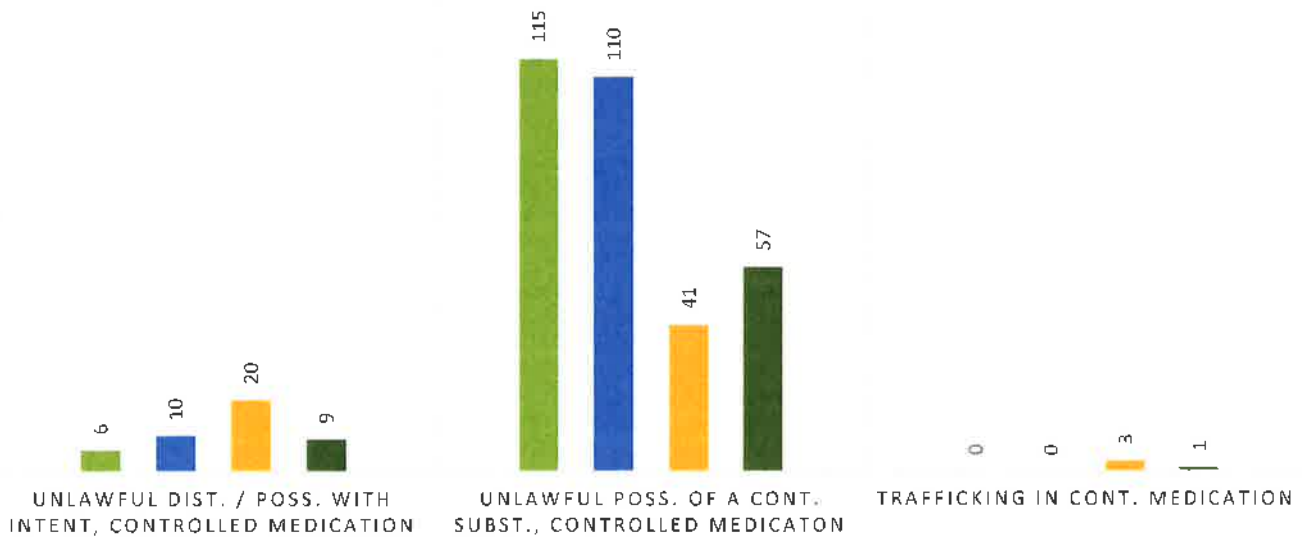
METHAMPHETAMINE

■ 2013 ■ 2014 ■ 2015 ■ 2016



CONTROLLED MEDICATION

■ 2013 ■ 2014 ■ 2015 ■ 2016





2016 DRUG ENFORCEMENT CASE STATISTICS BY MONTH



Offence	JAN	FEB	MAR	APR	MAY	JUN	JUL	AUG	SEP	OCT	NOV	DEC	TOTAL:
10 Unlawful Dist. / Poss. with Intent, Cocaine	0	0	0	0	0	0	0	0	0	0	0	0	0
11 Unlawful Dist. / Poss. with Intent, Marijuana	2	1	1	2	0	0	4	0	0	2	0	0	12
12 Unlawful Dist. / Poss. with Intent, Methamphetamine	6	1	1	3	2	3	2	0	1	0	0	0	19
13 Unlawful Dist. / Poss. with Intent, Controlled Medication	1	0	1	2	3	0	0	0	1	0	1	0	9
14 Unlawful Dist. / Poss. with Intent, Synthetic Marijuana	0	1	0	0	1	0	2	0	0	0	0	1	5
15 Unlawful Dist. / Poss. with Intent, GHB	0	0	0	0	0	0	0	0	0	0	0	0	0
16 Unlawful Dist. / Poss. with Intent, Heroin	0	0	0	0	0	0	0	0	0	2	1	0	3
17 Unlawful Dist. / Poss. with Intent, Synthetic Controlled Subst. / Other	0	0	0	0	0	0	0	0	0	0	0	0	0
18 Dist. of a Controlled Subst. 18 or older to under 18	0	0	0	0	0	0	0	0	0	0	0	0	0
19 Dist. / Poss. Of an Imitation Cont. Subst.	0	0	0	0	0	1	0	1	0	0	0	0	2
20 Unlawful Poss. of a Controlled Subst., Cocaine	1	0	3	1	4	1	0	0	1	3	0	0	14
21 Unlawful Poss. of a Controlled Subst., Marijuana 1st	0	3	2	3	3	6	2	0	1	1	3	1	25
22 Unlawful Poss. Of a Controlled Subst., Marijuana 2nd	18	22	17	17	22	38	12	22	27	25	24	9	253
23 Unlawful Poss. of a Cont. Subst., Methamphetamine	5	13	5	2	11	9	0	13	6	5	4	6	79
24 Unlawful Poss. of a Cont. Subst., Controlled Medication	14	3	2	6	3	15	1	8	1	0	2	2	57
25 Unlawful Poss. of a Cont. Subst., Synthetic Marijuana	1	0	2	1	1	1	2	1	0	1	3	1	14
26 Unlawful Poss. of a Cont. Subst., GHB / Heroin	1	0	1	0	0	0	0	2	1	0	0	0	5
27 Unlawful Poss. of a Cont. Subst., Synthetic Controlled Subst. / Other	0	2	1	0	1	0	0	0	0	0	1	2	7
28 Chemical Endangerment of a Child	0	0	0	0	0	0	0	0	0	0	0	0	0
29 Diversion Inv. /General Drug Inv. (i.e. Trash Run)	0	0	0	0	0	1	0	0	0	0	0	0	1
30 Trafficking in Cocaine	0	0	0	0	0	0	0	0	0	0	0	0	0
31 Trafficking in Marijuana	0	0	0	0	0	0	0	0	0	0	0	0	0
32 Trafficking In Methamphetamine	0	0	1	1	0	0	0	0	0	0	1	0	3
33 Trafficking in Cont. Medication	0	0	0	0	0	0	0	1	0	0	0	0	1
34 Trafficking in Synthetic Marijuana	0	0	2	0	0	1	0	0	0	0	0	0	3
35 Trafficking in GHB	0	0	0	0	0	0	0	0	0	0	0	0	0
36 Trafficking in Heroin	0	0	0	0	0	0	0	0	0	0	1	1	2



2016 DRUG ENFORCEMENT CASE STATISTICS BY MONTH



37	Trafficking in Synthetic Cont. Subst., / Other	0	0	0	0	0	0	0	0	0	0	0	0	
38	Unlawful Manufacture of a Cont. Subst. (Clan Lab)	0	10	0	0	0	1	0	0	0	0	1	12	
39	Unlawful Manufacture of a Cont. Subst. (Other)	0	0	0	0	0	0	0	0	0	0	0	0	
40	Possession of Drug Paraphernalia (Misdemeanor)	19	21	21	17	39	31	6	28	28	17	17	8	252
41	Possession of Drug Paraphernalia (Felony)	0	0	0	0	0	0	0	0	0	0	0	0	
42	Criminal Solicitation to Commit Cont. Subst. Crime	0	0	0	0	0	0	0	0	0	0	0	0	
43	Attempt to Commit a Cont. Subst. Crime	0	0	0	2	0	0	0	0	0	1	0	3	
44	Criminal Conspiracy to Commit Cont. Subst. Crime	0	0	0	0	0	0	0	0	0	0	0	0	
45	Theft of Property 1st	0	0	0	0	0	0	0	0	0	0	0	0	
46	Theft of Property 2nd	2	0	2	2	2	0	6	4	2	2	1	2	25
47	Theft of Property 3rd	0	0	0	0	0	0	0	0	1	0	0	1	
48	Robbery 1st, 2nd, 3rd	0	0	0	0	0	0	0	0	0	0	0	0	
49	Receiving Stolen Property	0	1	0	0	0	0	0	0	0	0	0	1	
50	Prostitution	0	0	0	0	0	0	0	3	0	0	0	3	
51	Found Property	6	0	4	4	3	8	2	1	1	4	3	5	41
52	Drug Amnesty Program	0	0	1	1	0	0	0	0	1	0	0	3	
53	Poss. of Firearm / Certain Persons Forbidden	0	0	0	0	1	0	0	0	1	0	2	4	
54	Loitering	0	0	0	0	0	0	0	0	0	0	0	0	
55	Agency Assist	1	1	0	0	0	0	1	0	0	0	1	4	
56	Ill. Poss. Of Non-Controlled Prescription Medication	1	5	3	2	3	1	0	7	4	7	6	39	
57	Medication from Criminal Inv. (Death, Overdose, etc.)	0	2	2	1	0	1	0	0	0	3	0	9	
58	Other	0	1	0	2	0	9	0	6	2	3	1	2	26
TOTAL CASES:		78	87	72	69	99	127	40	94	80	77	73	41	937

2016 Annual Sex Offender Report

Name	Address	Status
Thomas M. Adams	<u>455 Cargill St., Prattville, Al</u>	<u>Misdemeanor – Register Only</u>
Clinton Albert	<u>453 Cargill St., Prattville, Al</u>	<u>Adult – Registration & Notification</u>
Charles R. Albright Jr.	<u>310 Robinson St., Prattville, Al</u>	<u>Misdemeanor – Register Only</u>
Juvenile Offender	<u>E. Poplar St., Prattville, Al</u>	<u>Juvenile – Register Only</u>
Juvenile Offender	<u>Cedar Dr., Prattville, Al</u>	<u>Juvenile – Register Only</u>
Corey M. Arrington	<u>230 Joyce St., Prattville, Al</u>	<u>Adult – Registration & Notification</u>
Clay A. Berryhill Jr.	<u>421 Reynolds Mill Rd. Prattville, Al</u>	<u>Adult – Registration & Notification</u>
Edward L. Bexley	<u>735 Lower Kingston Rd. Prattville, Al</u>	<u>Adult – Registration & Notification</u>
Larry M. Harris Bowman	<u>416 Utah Ct., Prattville, Al</u>	<u>Adult – Registration & Notification</u>
Nakia Dejarnette	<u>Incarcerated</u>	<u>Adult – Registration & Notification</u>
Venson L. Greene	<u>329 Marlette Dr., Prattville, Al</u>	<u>Misdemeanor –Registration Only</u>
Terry W. Goss	<u>722 Francis St., Prattville, Al</u>	<u>Adult – Registration & Notification</u>
Rebecca Gurzick	<u>435 Cargill St., Prattville, Al</u>	<u>Adult – Registration & Notification</u>
Juvenile Offender	<u>Old Farm Ln. South, Prattville, Al</u>	<u>Juvenile – Register Only</u>
Jerry L. Johnson	<u>452 Cargill St. Prattville, Al</u>	<u>Misdemeanor – Registration Only</u>

Alonzo Kimbrough	<u>331W. 6th St., Prattville, Al</u>	<u>Misdemeanor – Registration Only</u>
Juvenile Offender	<u>Station Dr. Prattville, Al</u>	<u>Juvenile – Registration Only</u>
Curtis Owens	<u>161 Lancelot Cir., Prattville, Al</u>	<u>Misdemeanor – Registration Only</u>
Pamela Schlechty	<u>616 W. Fourth St., Prattville, Al</u>	<u>Adult – Registration & Notification</u>
William Sellers	<u>213 Greencrest Ln., Prattville, Al</u>	<u>Adult – Registration & Notification</u>
Randy Smith	<u>240 Joyce St., Prattville, Al</u>	<u>Adult – Registration & Notification</u>
Jeremy S. Taylor	<u>150 10th St., Prattville, Al</u>	<u>Adult – Registration & Notification</u>
Adrian V. Thomas	<u>222 Joyce St., Prattville, Al</u>	<u>Adult – Registration & Notification</u>
Linberg Thomas Jr	<u>104 Danya Ct., Prattville, Al</u>	<u>Misdemeanor – Registration Only</u>
Dan E. Williamson Jr.	<u>1067 Arrowhead Dr. Prattville, Al</u>	<u>Adult – Registration & Notification</u>