



2017-2018 ANNUAL REPORT

PRATTVILLE POLICE DEPARTMENT

PRATTVILLE POLICE DEPARTMENT

2017-2018

ORGANIZATIONAL INFORMATION

<u>PERSONNEL</u>		<u>YEAR</u>	<u>BUDGET</u>	<u>SWORN OFFICERS</u>
83	SWORN POLICE OFFICERS	2013-2014	\$7,139,433	79
2	CODE ENFORCEMENT OFFICER	2014-2015	\$7,525,630	81
5	CLERICAL	2015-2016	\$7,994,265	81
1	CIVILIAN SUPPORT OFFICERS	2016-2017	\$8,094,908	83
		2017-2018	\$7,532,487	83
<hr/>				
91	TOTAL FULL TIME EMPLOYEES			
<u>PART TIME EMPLOYEES</u>				
19	SCHOOL CROSSING GUARDS			

DIVISIONS

PATROL DIVISON – CAPTAIN DAVID FOWLER	595-0212	pdpatrol@prattvilleal.gov
ADMINISTRATIVE DIVISON – CAPTAIN JAMES HARRY	595-0203	pdadmin@prattvilleal.gov
INVESTIGATIONS DIVISION – CAPTAIN JEFF HASSELL	595-0240	pdinvest@prattvilleal.gov

VEHICLES

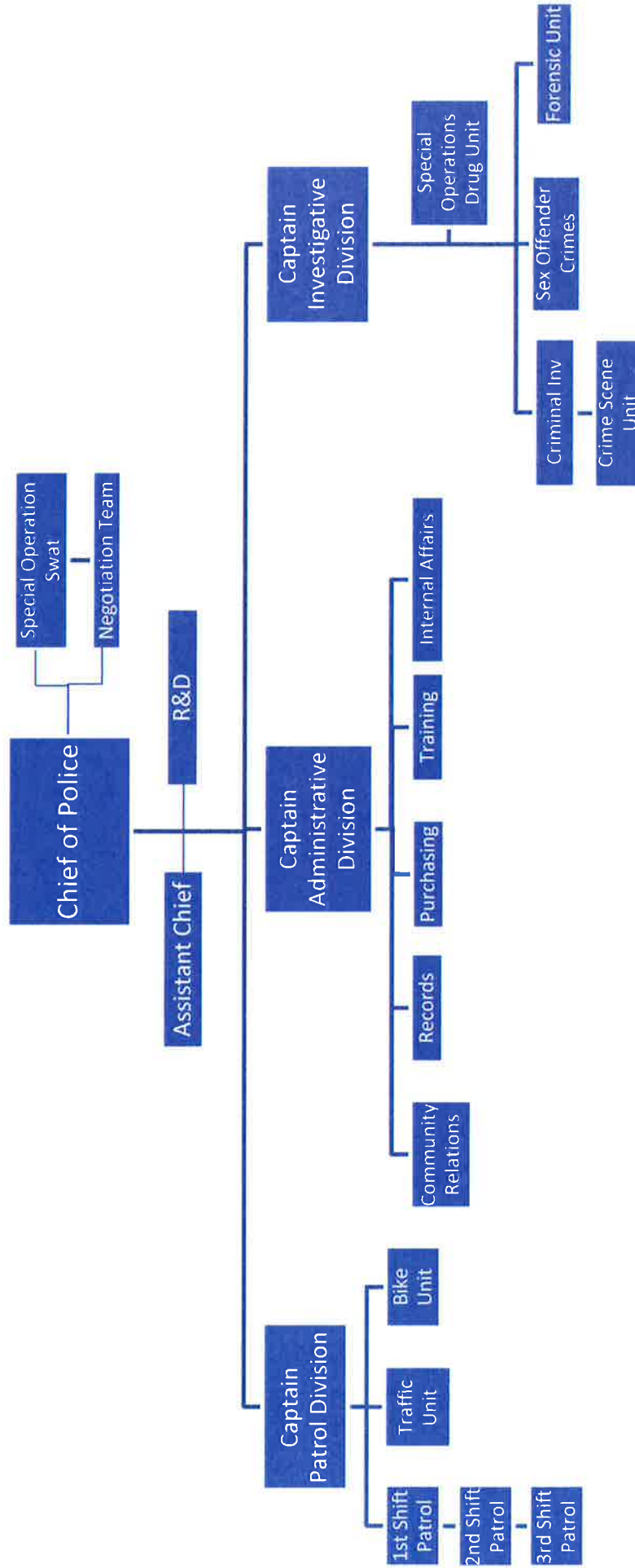
1,035,186 MILES DRIVEN BY THE PRATTVILLE POLICE DEPARTMENT IN 2017-2018

44	MARKED UNITS
22	UNMARKED UNITS
10	MOTORCYCLES
1	MOBILE COMMAND VEHICLE
1	DOG WARDEN TRUCK
1	POLICE TRUCK FOR TRAFFIC EQUIPMENT
1	SPECIAL OPERATIONS RESPONSE VEHICLE
1	KAWASAKI MULE
1	HUMVEE (SPECIAL OPERATIONS TACTICAL VEHICLE)

SERVICE AREAS

CITY LIMITS – APPROXIMATELY THIRTY-SIX (36) SQUARE MILES

POLICE JURISDICTION – APPROXIMATELY THIRTY-SEVEN (37) SQUARE MILES



2017-2018 PROMOTIONS

Captain James Harry 4/2018

Lieutenant Skip Tallmage 4/2018

Sergeant Richard White 4/2018

Sergeant Jerome Chatman 4/2018

Sergeant Tom Allen 7/2018

Sergeant Steve Davis 9/2018

Corporal Ren Carr 11/2017

Corporal Nick Cigelske 3/2018

2017-2018

AWARDS

Prattville Police Officer of the Year Award

INVESTIGATIVE DIVISION

Middle District of Alabama Officer of the Year

INVESTIGATOR SCOTT BAXLEY

CrimeStoppers Officer of the Year

LIEUTENANT RAY WAGNER

SERGEANT JOHN KEMP

VFW Officer of the Year

OFFICER RUSTY JACKSLAND

Exchange Officer of the Year

OFFICER JUSTIN THORNELL

2017-2018 Prattville Police Statistics

ITEM	2014	2,015	2016	2016-2017	2017-2018
Calls for Service	26,447	33,266	42,232	44,804	46,716
Felony Cases (Not including drug cases)	1,276	1,377	1,502	1,689	1,415
Juvenile Cases	142	160	174	267	110
Homicides	0	1	2	4	1
Traffic Arrest	4,897	4,235	5,704	7,824	8,180
Criminal Arrest - Misdemeanor and Felony	2,757	2,411	2,837	3,508	4,423
Domestic Violence Cases	502	526	466	433	500
Street Accidents	1,009	1,049	1,216	1,024	1,109
Private Property	562	534	512	513	476
Traffic Fatalities	1	0	1	1	2
Traffic Injuries	285	273	267	313	304
Pedestrian Fatalities	0	0	0	0	0
Pedestrian Injuries	0	0	0	0	0
Miles Driven	998,149	830,013	701,047	821,927	1,035,186
Gasoline	76,921	57,121	53,913.00	60,466.00	69,098.00
Officer Assaulted	5	2	1	1	3
Alarm Calls	2,532	2,404	2,502	2,377	2,330
Officer Training Hours	7,417	10,197	10,258	11,376	11,598

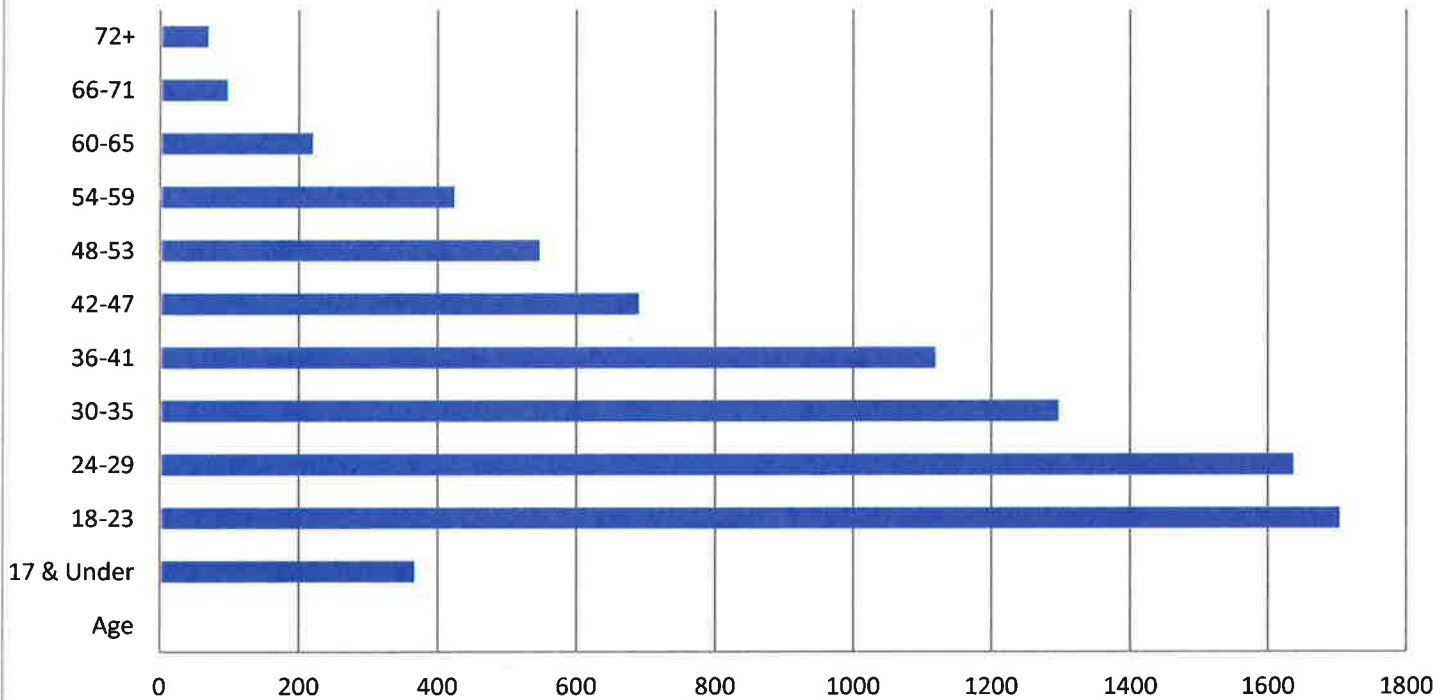
PRATTVILLE POLICE DEPARTMENT
Total Traffic Citation Report by Violation 10/1/2017 - 9/30/2018

Violation	Description	Total
32-1-3	Right To Use Hwy Restricted	2
32-10-1	Leaving the scene of an accident	3
32-10-1(F)	Felony Leaving the Scene/TA	3
32-5-211	Imp Flag/Lights at end of load	2
32-5-214	Improper Mirrors	1
32-5-215	Obstructed Windshield	3
32-5-216	Improper Muffler	13
32-5-222	No Child Restraint Seat	72
32-5-240	Improper Lights	594
32-5-240(A)(1)	No Headlights When Raining	3
32-5-240(C)	Imp Tail Lights-Trailer	5
32-5-240(C)(3)	Improper Tag Light	324
32-5-241	Imp Auxiliary Lights	2
32-5-241(B)(2)	Inoperable Brake Lights	4
32-5-242(B)(3)	No Operable Hi Beam Indicator	2
32-5-242(C)	No/Imp Tag Light	1
32-5-242(C)(1)	Fail Dim Light (Oncoming)	2
32-5-242(C)(2)	Fail Dim Light (Following)	1
32-5-242(G)	Imp Light Coloring	7
32-5-64	Driving Under Age 16	1
32-5-77	Extreme Left Side	1
32-5A-112(B)	Fail Stop for Sign or Yield In	70
32-5A-112(C)	Fail Yield ROW	4
32-5A-115(A)	Failure to Yield/Emerg Vehicle	3
32-5A-115(C)	Blue lights on non police veh	2
32-5A-130	Improper Turn	5
32-5A-131	U Turn	1
32-5A-133	Improper Signal/Turn	21
32-5A-133(C)	Slowing/Stop w/o Prop Signal	1
32-5A-134	Signal by Arm or Signal Lamps	53
32-5A-136(A)	Stopping on Highway	6
32-5A-137	Improper Parking	2
32-5A-153	Fail to Stop/Exit Parking Lot	1
32-5A-170	Reasonable and Prudent Speed	25
32-5A-171	Speeding	1290
32-5A-174	Minimum Speed Regulation	1
32-5A-178	Racing on Highway	7
32-5A-182	Speeding in a School Zone	23
32-5A-190	Reckless Driving	21
32-5A-191(A)(3)	DUI (Controlled Substance)	14
32-5A-191(A)(4)	DUI (Alcohol & Cont Sub)	6
32-5A-191(A)(5)	DUI (Any Impairing Sub)	5
32-5A-191(A)1	DUI (8% Or More Alcohol)	5
32-5A-191(A)2	DUI (Alcohol)	57
32-5A-191(B)	DUI Person Under Age 21	2
32-5A-191.4(L)	Ignition Interlock Violation	4
32-5A-215	Pedestrian on Roadway	1
32-5A-31	Obedient Traffic Control Device	4
32-5A-32	Running Red Light	59
32-5A-330	Open Container	72
32-5A-350	Texting While Driving	9
32-5A-58.2	Move Over Act	20
32-5A-60	Littering Law	5
32-5A-61	Blocking Intersection	1

PRATTVILLE POLICE DEPARTMENT
Total Traffic Citation Report by Violation

Violation	Description	Total
32-5A-80	Driving Wrong Side of Road/Hwy	8
32-5A-82	Overtaking vehicle on left	1
32-5A-82(2)	Yield to vehicle pass on left	9
32-5A-83	Improper Pass on Right	2
32-5A-84	Improper Pass on Left	2
32-5A-85	No Passing Curve,Hill,Intersec	1
32-5A-86	No Passing Zone	18
32-5A-88	Improper Lane Usage	55
32-5A-89	Following Too Closely	4
32-5B-4	Failure to Wear Seat Belt	411
32-5C-2	Prohibitions of Window Tint	3
32-5C-2(1)	Prohibitions of Window Tint	1
32-5C-2(2)	Tinted Windows <30%	9
32-6-1	No Drivers License	107
32-6-1(A)	No Drivers License	159
32-6-1(B)	Expired Drivers License	36
32-6-19	Suspended/Revoked License	1247
32-6-49.7	Driving Without a CDL	1
32-6-51	No Tag Visible	33
32-6-52	Improper Tag	36
32-6-61	Failure to Register Vehicle	147
32-6-65	Improper State Tag, Decal, etc	512
32-6-8	Learners License	4
32-6-9	License not on person	118
32-7-01	No Liability Insurance	1
32-7A-16	No Insurance/Imp Registration	479
32-7A-16(A)(1)	Operate Vehicle w/o Insurance	4
32-7A-16(B)(1)	Fail/Refuse Display Insurance	1741
32-7A-4	Operate Vehicle w/o Insurance	5
32-8-86	Switched Tag	164
40-12-252	No Tag on utility trailer	11
40-12-260(A)(1)	Tag Follows Owner, Not Vehicle	1
40-12-260(B)(1)	No Tag Registration in Veh	1
50-74	Loud Disturbing Unness Noise	1
62-59	Digging Out	2
Report Totals		8180

PRATTVILLE POLICE DEPARTMENT CITATIONS BY AGE 2017-2018



■ Series1

Age	17 & Under	18-23	24-29	30-35	36-41	42-47	48-53	54-59	60-65	66-71	72+
Series1	366	1704	1637	1296	1119	690	547	423	219	96	68



PRATTVILLE POLICE DEPARTMENT 2017-2018

Total Offenses Report by Statute

<u>Statute Code</u>	<u>Statute Description</u>	<u>Total</u>
1-1-2 YOU	YOUTHFUL OFFENDER	18
1-8	Failure To Obey Orders Police	62
10-41	Running at Large	3
10-41 CITY	Allowing Dog To Run At Large	14
12-15-1	Runaway Juvenile	3
12-15-111	Contribute Delinquency Minor	3
12-15-125(B)(2)	Child In Need Of Supervision	22
12-15-56	Child In Need Of Supervision	16
13A-10-129	Tampering with Physical Evid.	1
13A-10-15	Terrorist Threats	3
13A-10-2	Obstructing Gov't Operations	3
13A-10-33	Escape Third Degree	1
13A-10-36	Promote Prison Contriband 1st	1
13A-10-39	Failure to Appear/Comply/Pay	63
13A-10-41	Resisting Arrest	22
13A-10-52	Attempt to Elude LE Officer	18
13A-10-52(C)	Attempt Elude LE Off w injury	1
13A-10-82	Misuse of Confidential Info.	3
13A-10-9	False Report to LE Authority	1
13A-11-10	Public Intoxication	101
13A-11-50	Carrying Concealed Weapons	3
13A-11-53	Brass Knuckles	2
13A-11-61.1	Shoot Into Occ Auto/Building	4
13A-11-64	Alter Firearm ID Number	1
13A-11-7	Disorderly Conduct	32
13A-11-72	Forbidden Possess Pistol School Grounds	1
13A-11-73	Carry Pistol w/o License	25
13A-11-8(A)	Harassment	68
13A-11-8(B)	Harassing Communications	25
13A-11-9(A)(1)	Loitering (Begging)	2
13A-12-130	Public Lewdness	3
13A-12-192	Pornography Possession Child	27
13A-12-197	Pornography Production Minors	26
13A-12-211	Unl Dist Controlled Sub	5
13A-12-212	Unlaw Poss Contr Substance	47
13A-12-213	Drug-Poss Marijuana 1st	10
13A-12-214	Drug-Poss Marijuana 2nd	176
13A-12-260	Drug-Poss Paraphenalia	106
13A-13-6	Endangering Welfare of Child	16
13A-4-2(13A62)	Attempted Murder	1

<u>Statute Code</u>	<u>Statute Description</u>	<u>Total</u>
13A-4-2(13A662)	Attempted Rape	1
13A-4-2(13A811)	Attempted B&E Motor Vehicle	1
13A-4-2(13A83)	Attempted Theft 1st	1
13A-6-125	Facilitate Travel of Child-Sex	1
13A-6-130	Domestic Violence 1st	1
13A-6-131	Domestic Violence 2nd	1
13A-6-132	Domestic Violence 3rd	144
13A-6-137	Interfer DV Emergency Call	7
13A-6-142	Violation of Protection Order	8
13A-6-20	Assault 1st	3
13A-6-21	Assault 2nd	1
13A-6-22	Assault 3rd	2
13A-6-23 DM	Menacing-Domestic Violence	1
13A-6-23 MN	Menacing	6
13A-6-24	Reckless Endangerment	7
13A-6-25	Criminal Coercion	1
13A-6-27	Use of Pepper Spray, etc	1
13A-6-62	Rape Second Degree	6
13A-6-64	Sodomy 2nd	4
13A-6-66	Sexual Abuse First Degree	1
13A-6-68	Indecent Exposure	1
13A-7-2	Criminal Trespass 1st	6
13A-7-22	Criminal Mischief 2nd. >500	4
13A-7-23	Criminal Mischief 3rd. <500	19
13A-7-26	Criminal Tampering 2nd	3
13A-7-3	Criminal Trespass 2nd	4
13A-7-4	Criminal Trespass 3rd Degree	25
13A-7-5	Burglary First Degree	1
13A-7-7	Burglary Third Degree	8
13A-8-10.3 NEW	Theft of Services 4th <500	3
13A-8-11(A)	Unauth Use Motor Vehicle Force	6
13A-8-11(B)	Unl B&E Veh (No Theft)	24
13A-8-11(B) WITH THEFT	Unl B&E Veh (withTheft)	72
13A-8-144	Theft by Fraudulent Leasing(F)	1
13A-8-17	Receiving Stolen Prop 1st>2500	10
13A-8-18	Receiving Stolen Prop 2nd>500	3
13A-8-18.1	Receiving Stln Prop 3rd \$500-\$1499	1
13A-8-19	Receiving Stolen Prop 3rd <500	2
13A-8-19 NEW	Receiving Stolen Prop 4th <\$500	4
13A-8-192	Identity Theft	9
13A-8-193	Trafficking Stolen Identities	1
13A-8-194	Use False Id Obstruct Justice	1

<u>Statute Code</u>	<u>Statute Description</u>	<u>Total</u>
13A-8-3	Theft of Property 1st >2500	19
13A-8-4	Theft of Property 2nd >500	2
13A-8-4 NEW	Theft of Property 2nd 1500-2500	17
13A-8-4.1	Theft of Property 3rd 500-1499	28
13A-8-41	Robbery 1st Degree	5
13A-8-43	Robbery 3rd Degree	1
13A-8-5	Theft of Property 3rd <500	21
13A-8-5 NEW	Theft of Property 4th <500	277
13A-8-7	Theft of Lost Prop 1st >\$2500	1
13A-9-13.1	Neg Worthless Neg Instrument	1
13A-9-14	Ill Poss/Use Credit/Debit Card	28
13A-9-18.1	Giving False Name to Law Enf	35
13A-9-5	Crim Poss of Forged Inst 1st	3
13A-9-6	Crim Poss Forged Inst 2nd	1
13A-9-6.1	Crim Poss Forged Inst 3rd	6
15-20A-11	Sex Offendr-Prohibited Residenc	1
15-22-54	Probation Violation	5
26-15-3	Child Abuse (Torture)	1
28-11-13	Illegal Poss Tobacco Products	1
28-3A-25(19)	Illegal Poss of Alcohol	8
3-1-5 (COUNTY)	Permitting dog to run at large	1
30-5-7	Violation of Court Order	3
32-10-1(M)	Misdemeanor Leaving Scene/TA	3
32-10-2(F)	Felony Leaving Scene/TA	1
32-5-222	No Child Restraint Seat	1
32-51-191.4	IGNITION INTERLOCK VIOLATION	4
32-5A-112	Failed to Yield Stop Sign	1
32-5A-112(B)	Fail Stop for Sign or Yield In	1
32-5A-134	Signal by Arm or Signal Lamps	1
32-5A-170	Reasonable and Prudent Speed	3
32-5A-171	Speeding	1
32-5A-174	Minimum Speed Regulation	1
32-5A-190	Reckless Driving	4
32-5A-191(A)(3)	DUI (Controlled Substance)	12
32-5A-191(A)(4)	DUI (Alcohol & Cont Sub)	4
32-5A-191(A)(5)	DUI (Any Impairing Sub)	7
32-5A-191(A)1	DUI (8% Or More Alcohol)	6
32-5A-191(A)2	DUI (Alcohol)	56
32-5A-191(B)	DUI Person Under Age 21	3
32-5A-193	Attempting to Elude Police	4
32-5A-84	Improper Pass on Left	1
32-5A-88	Improper Lane Usage	2
32-5A-89	Following Too Closely	1
32-6-19	Suspended/Revoked License	6

<u>Statute Code</u>	<u>Statute Description</u>	<u>Total</u>
32-6-51	No Tag Visible	1
32-6-52	Improper Tag	2
32-7A-16	No Insurance/Imp Registration	3
32-7A-16(A)(1)	Operate Vehicle w/o Insurance	3
34-23-7	Illegal Poss Prescription Drug	15
46-101	Leaving NonOperating Vehicle on Property	3
46-4	Garbage/Rubbish about Premis	2
50-3	Curfew Violation	3
50-49	Public Consumption	1
ACT 2011-640	SORNA	1
ALIAS	Alias Warrant/Failure To Appea	1367
BOND	Bondsman off Bond	1
CAPIAS	Capias Warrant/Fail to Pay	12
CONTEMPT OF CT.	Contempt of Court	79
COURT ORDER	Court Order	13
EXTRADITION IN	Extradition in State	4
EXTRADITION OUT	Extradition out State	1
GJ INDICTMENT	Grand Jury Indictment	6
HOLD	Hold For Other Agency	16
INV HOLD ONLY	Investigative Hold Only	1
PICK UP ORDER	Pick Up Order	2
SEC 71 APPEND A	Violation of Zoning Ordinance	1
WRIT	Writ of Arrest	953

Total reported: 4423

PRATTVILLE POLICE DEPARTMENT
Offenses Known to Police
October 1, 2017 thru September 30, 2018

1 Classification of Offenses	2 Offenses Reported	3 Unfounded Complaint	4 Actual Offense C2 - C3	5 Offenses Cleared	6 Juvenile Clearance
1. CRIMINAL HOMICIDE					
a. Murder/Nonneg Mansl (11)	1	0	1	1	0
b. Manslaughter by Negl (12)	0	0	0	0	0
2. FORCIBLE RAPE (20)	14	2	12	12	1
a. Rape by Force (21)	14	2	12	12	1
b. Attempt Forcible Rape (22)	0	0	0	0	0
3. ROBBERY (30)	35	2	33	25	1
a. Firearm (31)	23	2	21	16	1
b. Knife or Cutting Inst. (32)	3	0	3	3	0
c. Other Dangerous Weapon (33)	2	0	2	2	0
d. Hands-Fist-Feet-Etc. (34)	7	0	7	4	0
4. ASSAULT (40)	685	3	682	340	10
a. Firearm (41)	10	0	10	4	1
b. Knife or Cutting Inst. (42)	4	0	4	4	0
c. Other Dangerous Weapon (43)	5	0	5	5	0
d. Hands-Fist-Feet-Etc. (44)	33	1	32	23	0
e. Other Assaults-Simple (45)	633	2	631	304	9
5. BURGLARY (50)	128	7	121	51	1
a. Forcible Entry (51)	70	2	68	30	0
b. Unlawful Entry/No Force (52)	58	5	53	21	1
c. Attempt Forcible Entry (53)	0	0	0	0	0
6. LARCENY - THEFT (60)	1170	35	1135	488	34
7. MOTOR VEHICLE THEFT (70)	71	8	63	36	1
a. Autos (71)	60	7	53	31	1
b. Trucks and Buses (72)	8	1	7	5	0
c. Other Vehicles (73)	3	0	3	0	0
=====					
GRAND TOTAL (77)	2104	57	2047	953	48

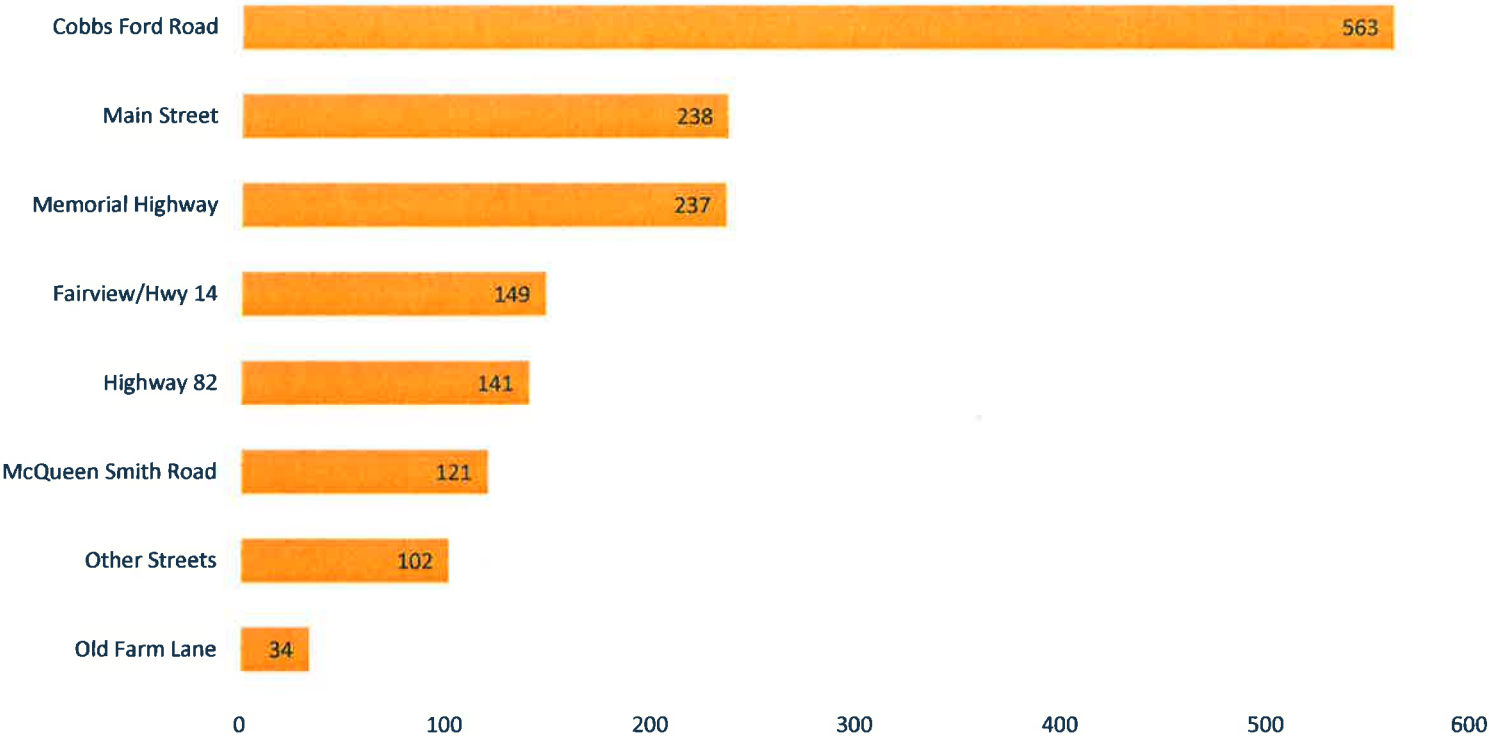
3 Officer(s) Assaulted
376 Clearance(s) by Adult Arrest
45 Clearance(s) by Juvenile Arrest
0 Arson Cases

PRATTVILLE POLICE DEPARTMENT
Total Accidents Report by Primary Cause
2017-2018

Primary Cause	Total Accidents
Aggressive Operation	2
Cargo Fell or Load Shift	2
Crossed Centerline	8
Crossed Median	1
DRIVER NOT IN CONTROL	1
DUI	18
Defective Equipment	8
Distracted by Fallen Object	2
Distracted by Passenger	8
Driving Too Fast For Condition	21
FTY ROW At Uncntrl'd Intersecti	1
FTY ROW From Driveway	33
FTY ROW From Stop Sign	120
FTY ROW From Traffic Signal	35
FTY ROW From Yield Sign	13
FTY ROW Making Left/U-Turn	63
FTY ROW Making Right Turn	2
FTY ROW To Ped In Crosswalk	1
FTY ROW-Othr FTY (Explain)	23
Fatigued/Asleep	10
Followed Too Close	101
Improper Backing	267
Improper Lane Change/Use	63
Improper Parking/Stopped In Rd	1
Improper Passing	9
MADE IMPROPER TURN	1
Made Improper Turn	83
Misjudge Stopping Distance	67
Not Applicable	44
Other	162
Other Distraction Inside Vehic	47
Other Distraction Outside Veh	100
Other Improper Action(Explain)	46
Other-No Improper Driving	8
Over Correct/Over Steering	6
Over Speed Limit	4
Pedestrian Wrong Side of Road	1
Ran Off Road	10
Ran Stop Sign	3
Ran Traffic Signal	16
Swerved To Avoid Animal	5
Swerved To Avoid Object	1
Swerved To Avoid Vehicle	18
Traveling Wrong Way/Wrong Side	1
Unknown	101
Unseen Object/Person/Vehicle	28
Use of Electronic Comm Device	10
Use of Other Electronic Device	10

Total accidents: 1585

Top Locational Accidents 2017-2018





ANNUAL DRUG ENFORCEMENT CASE STATISTICS



Off. Code	Offense	Fiscal Year Stats Oct. 2017 - Sept. 2018
10	Unlawful Dist. / Poss. with Intent, Cocaine	0
11	Unlawful Dist. / Poss. with Intent, Marijuana	10
12	Unlawful Dist. / Poss. with Intent, Methamphetamine	11
13	Unlawful Dist. / Poss. with Intent, Controlled Medication	0
14	Unlawful Dist. / Poss. with Intent, Synthetic Marijuana	3
15	Unlawful Dist. / Poss. with Intent, GHB	0
16	Unlawful Dist. / Poss. with Intent, Heroin	0
17	Unlawful Dist. / Poss. with Intent, Synthetic Controlled Subst. / Other	0
18	Dist. of a Controlled Subst. 18 or older to under 18	0
19	Dist. / Poss. Of an Imitation Cont. Subst.	3
20	Unlawful Poss. of a Controlled Subst., Cocaine	23
21	Unlawful Poss. of a Controlled Subst., Marijuana 1st	27
22	Unlawful Poss. Of a Controlled Subst., Marijuana 2nd	214
23	Unlawful Poss. of a Cont. Subst., Methamphetamine	50
24	Unlawful Poss. of a Cont. Subst., Controlled Medication	47
25	Unlawful Poss. of a Cont. Subst., Synthetic Marijuana	9
26	Unlawful Poss. of a Cont. Subst., GHB / Heroin	1
27	Unlawful Poss. of a Cont. Subst., Synthetic Controlled Subst. / Other	14
28	Chemical Endangerment of a Child	2
29	Diversion Inv. /General Drug Inv. (i.e. Trash Run)	1
30	Trafficking in Cocaine	0
31	Trafficking in Marijuana	0
32	Trafficking In Methamphetamine	1
33	Trafficking in Cont. Medication	1
34	Trafficking in Synthetic Marijuana	0
35	Trafficking in GHB	0
36	Trafficking in Heroin	0



ANNUAL DRUG ENFORCEMENT CASE STATISTICS



37	Trafficking in Synthetic Cont. Subst., / Other	0
38	Unlawful Manufacture of a Cont. Subst. (Clan Lab)	0
39	Unlawful Manufacture of a Cont. Subst. (Other)	0
40	Possession of Drug Paraphernalia (Misdemeanor)	195
41	Possession of Drug Paraphernalia (Felony)	0
42	Criminal Solicitation to Commit Cont. Subst. Crime	1
43	Attempt to Commit a Cont. Subst. Crime	2
44	Criminal Conspiracy to Commit Cont. Subst. Crime	0
45	Theft of Property 1st	0
46	Theft of Property 2nd	14
47	Theft of Property 3rd	0
48	Robbery 1st, 2nd, 3rd	1
49	Receiving Stolen Property	2
50	Prostitution	0
51	Found Property	32
52	Drug Amnesty Program	4
53	Poss. of Firearm / Certain Persons Forbidden	13
54	Loitering	0
55	Agency Assist	3
56	Ill. Poss. Of Non-Controlled Prescription Medication	40
57	Medication from Criminal Inv. (Death, Overdose, etc.)	16
58	Other	18
TOTAL CASES:		758

Adult Sex Offenders

City of Prattville

1. Charlie Albright – Misdemeanor/Adult
2. Venson Greene - Misdemeanor/Adult
3. Charles Mann – Notification Act / Adult
4. Jeremy Taylor - Notification Act / Adult
5. Adrian Thomas - Notification Act / Adult
6. Jerry Johnson - Notification Act / Adult
7. Rodney Kuykendall - Notification Act / Adult
8. Corey Arrington - Notification Act / Adult
9. Clay Berryhill - Notification Act / Adult
10. Pamela Schlechty - Notification Act / Adult
11. William Sellers - Notification Act / Adult
12. Dan Williamson - Notification Act / Adult
13. Randy Smith - Notification Act / Adult
14. Brian Christopher - Notification Act / Adult
15. Loyce Petty - Notification Act / Adult
16. Lindberg Thomas – Misdemeanor/Adult
17. Edward Bexley - Notification Act / Adult
18. Larry Bowman - Notification Act / Adult
19. Curtis Owens - Misdemeanor/Adult
20. Alonzo Kimbrough - Misdemeanor/Adult
21. James Cartwright - Misdemeanor/Adult