



**City of Prattville, Alabama  
Annual Report  
July 2016 – September 2016  
MS4 Storm Water Management Program  
NPDES Permit No. ALS000010**

**January 31, 2017**



## 1.0 Introduction

### 1.1 *City of Prattville Phase II MS4 Program*

In June 2016, the City of Prattville was issued NPDES Permit No. ALS000010 by the Alabama Department of Environmental Management (ADEM). The permit, which was effective July 1, 2016, authorizes storm water discharges from the City of Prattville Municipal Separate Storm Sewer System (MS4).

### 1.2 *City of Prattville MS4 Area*

The City of Prattville MS4 corresponds with that portion of the corporate limits within the Montgomery Urbanized Area as defined by the 2010 U. S. Decennial Census. The Prattville MS4 covers approximately 17.8 square miles within the City's total 34.3 square mile area. A map delineating the boundary and the city limits is included as Appendix A.

### 1.3 *Watershed Information*

The City of Prattville MS4 is located in the Upper Alabama sub-basin of the larger Alabama River basin. Three smaller watersheds within the sub-basin, Autauga Creek, Pine Creek, and Noland Creek, receive storm water discharges from the Prattville MS4. The creeks are shown in Appendix A.

### 1.4 *Annual Report*

As stated in Part IV of the permit, the City of Prattville must submit an annual report to ADEM detailing compliance with the permit requirements and the goals established by the City for its Storm Water Management Program. Annual reports are due no later than the January 31 following the end of the City's most recent fiscal year. This report covers the period from July 1, 2016 effective date of the NPDES permit to September 30, 2016 and includes the following required information:

1. List of contacts and responsible parties.
2. Overall evaluation of Prattville Storm Water Management Program (SWMP).
3. Narrative report of the five SWMP elements.
4. Water quality monitoring.
5. Status of the Storm Water Management Program Plan (SWMPP) formulation and adoption.
6. Summary of SWMP regulatory program and enforcement.



7. Status of public education programs.
8. Status of expenditures and budget for fiscal year covered by report and the current fiscal year.

### *1.5 Availability of Report*

This annual report has been provided to the Alabama Department of Environmental Management in paper and electronic format. The report is available for public review on the City of Prattville web site ([www.prattvilleal.gov](http://www.prattvilleal.gov)). Printed copies of the report are available upon request and payment of copying fees from the Office of the City Clerk and the Planning Department.

## **2.0 Contacts List / Responsible Parties**

The personnel responsible for preparation of this report are:

Mr. Joel T. Duke, AICP  
Planning Director  
City of Prattville  
102 West Main Street  
Prattville, AL 36067  
[joel.duke@prattvilleal.gov](mailto:joel.duke@prattvilleal.gov)

Mr. Dale Gandy  
Public Works Director  
City of Prattville  
101 West Main Street  
Prattville, AL 36067  
[dale.gandy@prattvilleal.gov](mailto:dale.gandy@prattvilleal.gov)

Mr. Dewayne Smith, P.E., CPESC, CPSWQ, CPMSM  
Vice President  
Hydro Engineering Solutions  
2124 Moore's Mill Road, Suite 120  
Auburn, AL 36830  
[dsmith@hydro-engineering.net](mailto:dsmith@hydro-engineering.net)



### **3.0 SWMP Program Evaluation**

#### *3.1 Major Findings*

None of the waterways in the City of Prattville corporate limits or the MS4 are designated as impaired, included on the most recent 303(d) list issued by ADEM, or has an EPA-Approved Total Maximum Daily Load (TMDL).

The City of Prattville had only recently begun formulating a Storm Water Management Program Plan at the end of this reporting period. As a result, clear program goals and benchmarks had not been established and were not yet available for measurement and evaluation. The City anticipates adoption of plan and implementation of program elements before the end of program year 2017.

#### *3.2 Major Accomplishments*

For the past decade, the City of Prattville has implemented measures to maintain and improve water quality as a matter of policy rather than regulation. As a result, the City has formed partnerships, promoted public awareness, and inventoried systems in an effort to improve water quality and to assure drainage system integrity. These ongoing efforts complement the required elements of the City's storm water permit and will be incorporated into the City's SWMPP. These activities are included here as major accomplishments for the brief reporting period.

1. NPDES Permit No. ALS000010 issued to the City of Prattville effective July 1, 2016. In April 2014, the City of Prattville received notice that its designation as an urban area required it to apply for a Phase II storm water permit. By October 2014, the City completed an application for an individual Phase II permit. A draft permit was provided by ADEM to the City for comment in late 2014. A response was forwarded to ADEM by February 2015. ADEM issued a formal draft of the City's permit for public comment in November 2015. After having reviewed and addressed the City's final comments, ADEM issued the City's permit on June 17, 2016.
2. Formulation of a Storm Water Management Program Plan. In September 2016, the City of Prattville contracted with Hydro Engineering Solutions for assistance in the preparation of its initial Storm Water Management Program Plan (SWMPP). The City's NPDES permit requires adoption and submission of the initial SWMPP to ADEM by April 1, 2017. Portions of a January 2017 draft of the SWMPP are included with this report as



Appendix B. The City of Prattville anticipates submission of a final adopted plan no later than April 1, 2017.

3. Public Education and Outreach

- a. Autauga County Water Festival – In a partnership with the Alabama Cooperative Extension Service, USDA Natural Resources Conservation Service, approximately one hundred local volunteers, the City of Prattville has conducted the Autauga County Water Festival each April since 2005. The festival provides all 4<sup>th</sup> graders in the county an opportunity to participate in a day of hands-on activities promoting clean water and watershed protection.
- b. Alabama River Clean Water Partnership – The City of Prattville participates in, and provides annual funding for, the Alabama River Clean Water Partnership. The partnership is a nonprofit organization which provides a neutral forum to discuss and work toward solutions to regional and local water quality issues. Besides providing a forum for discussing the issues, the partnership also spearheads educational programs such as rain barrel workshops and rain garden demonstration projects.
- c. Prattville Business Breakfast – In an effort to raise awareness of water quality issues among a wider group and recruit additional partners, the Alabama River Clean Water Partnership and the City of Prattville have hosted an annual breakfast meeting aimed at the local business community. The speaker at the most recent event discussed the importance of water recreation as economic development.

4. Autauga Creek Improvement Committee. In July 2011, Mayor Bill Gillespie formed the Autauga Creek Improvement Committee (ACIC) in an effort to improve access to and use of Autauga Creek for recreation. The volunteer committee, which has since become an independent non-profit group, organized to revive a six mile long canoe/kayak trail running from downtown Prattville to the Alabama River. Initially concentrating on re-opening paths blocked by deadfalls and debris, ACIC quickly shifted its focus to clearing trash and garbage from the creek. A true partner with the City of Prattville, ACIC continues to conduct periodic clean-ups to remove debris and garbage from the creek. In the past couple of years, ACIC's efforts earned Autauga Creek a spot on the Alabama Scenic River Trail and designation as a National Recreational Trail. Through ACIC's determination, Autauga Creek has become a popular destination for paddlers, fisherman, and those simply seeking to cool off on a summer afternoon.



5. Drainage System Inventory and Evaluation. In September 2016, the City of Prattville contracted with Volkert, Inc. to conduct an inventory of all drainage facilities in the City of Prattville. Scheduled for completion by the spring 2017, the project will provide the City with a comprehensive view of MS4 and the overall drainage system. The resulting GIS database will be used in several components of the storm water management plan include illicit discharge detection and elimination and construction site management.

### *3.3 Overall Program Strengths and Weaknesses*

As noted in this report, the City of Prattville's NPDES permit was effective for three months before the end of the reporting period. Strengths and deficiencies in the City's storm water program have been revealed as work continues on an initial SWMPP. A more complete assessment of program strengths, weakness and opportunities will be provided once the plan is implemented.

Currently, the program's main strength is its existing public education and outreach efforts including those detailed in Section 3.2 These efforts include establishing long-term partnerships with organizations that reach a diverse audience. The City expects to build on these past efforts and relationships for implementation of its SWMPP.

The program's primary weakness at this early stage is the limited institutional knowledge and experience in the area storm water management. This weakness will be mitigated through implementation of programs and processes in the SWMPP currently under development.

### *3.4 Future of the Program*

During the 2016-2017 reporting period, the City will:

- Release a draft Storm Water Management Program Plan (SWMPP) for public review and comment
- Finalize and adopt its initial SWMPP
- Complete a city-wide inventory of storm water facilities
- Designate a storm water administrator to manage SWMPP implementation
- Develop ordinances addressing illicit storm water discharges, construction site runoff, and post-construction facilities.



#### **4.0 Narrative Report**

Part II.A of the City's NPDES permit requires the development, implementation, and maintenance of a storm water management program to reduce the discharge of pollutants into local waterways and streams. The City's program will be governed by a Storm Water Management Program Plan (SWMPP) that establishes minimum pollution control measures in five general areas – public education/public involvement, illicit discharge detection and elimination, construction site storm water runoff control, post-construction storm water management, and pollution prevention/good housekeeping for municipal operations. The City's SWMPP is currently under development and scheduled for submission to ADEM by April 1, 2017. As required by Part II.A.5 of the City's permit, the minimum control measures outlined in the plan will be implemented no later than July 1, 2017. Municipal ordinances regulating illicit discharges, construction site runoff control and, post-construction design and maintenance will be adopted and implemented no later than July 1, 2018.

A detailed report of accomplishments for each SWMPP program area and tasks will be provided in this section in subsequent annual reports. Preliminary goals and implementation dates for program areas and components are included in summary form as Appendix B.

#### **5.0 Water Quality Monitoring**

The City of Prattville MS4 does not include any regulated streams listed as or considered to be impaired. No monitoring activities are currently required under the City's permit.

#### **6.0 Status of the Storm Water Management Program Plan**

In September 2016, the City of Prattville contracted with Hydro Engineering Solutions for assistance in the preparation of its initial Storm Water Management Program Plan (SWMPP). The City's NPDES permit requires adoption and submission of the initial SWMPP to ADEM by April 1, 2017. Portions of a January 2017 draft of the SWMPP are included with this report as Appendix B. The City of Prattville anticipates submission of a final approved plan no later than April 1, 2017.

#### **7.0 Summary of SWMP Regulatory and Enforcement Actions**

The SWMP currently under development includes elements addressing illicit discharges, construction site runoff and post-construction control measures. Several program components



will be implemented no later than July 1, 2017. Other components, which require modification to city ordinances, will be implemented by July 1, 2018.

## 8.0 Implementation Status - Public Education Programs

As outlined in the Section 3.2 of this report, the City of Prattville proactively implemented several public education programs prior to receiving a Phase II storm water permit. These ongoing efforts complement the required elements of the City's storm water permit and will be incorporated into the City's SWMPP. Implementation of these and additional education efforts will be detailed in subsequent reporting periods.

## 9.0 Fiscal Analysis

The City of Prattville's storm water management and maintenance programs are funded annually from the City's General Fund.

In Fiscal Year 2016, the City of Prattville budgeted \$733,000 for activities related to storm water management.

Table 9.1 FY 2016 Storm Water Program Budget

| Program Component   | Budgeted Amount  |
|---|------------------|
| NPDES Permit Application and Review   | \$3,000          |
| Public Outreach (Water Festival, Clean Water Partnership, Web Site, etc.)                 | \$10,000         |
| Drainage System Improvements  | \$120,000        |
| Drainage System Repairs   | \$50,000         |
| Drainage System Maintenance (Litter Collection, Ditch Maintenance, Street Sweeping, etc.) | \$550,000        |
| <b>Total FY 2016 Storm Water Budget</b>   | <b>\$733,000</b> |

In Fiscal Year 2017, the City of Prattville has budgeted \$817,000 for formulation and implementation of a storm water management program and management of the storm water system





Table 9.2 FY 2017 Storm Water Program Budget

| Program Component   | Budgeted Amount   |
|---|-------------------|
| Storm Water Management Plan Development and Adoption                                      | \$27,000          |
| Drainage System Inventory   | \$55,000          |
| Public Outreach (Water Festival, Clean Water Partnership, Web Site, etc.)                 | \$10,000          |
| Drainage System Improvements  | \$125,000         |
| Drainage System Repairs   | \$50,000          |
| Drainage System Maintenance (Litter Collection, Ditch Maintenance, Street Sweeping, etc.) | \$550,000         |
| <b>Total FY 2016 Storm Water Budget</b>   | <b>\$ 817,000</b> |



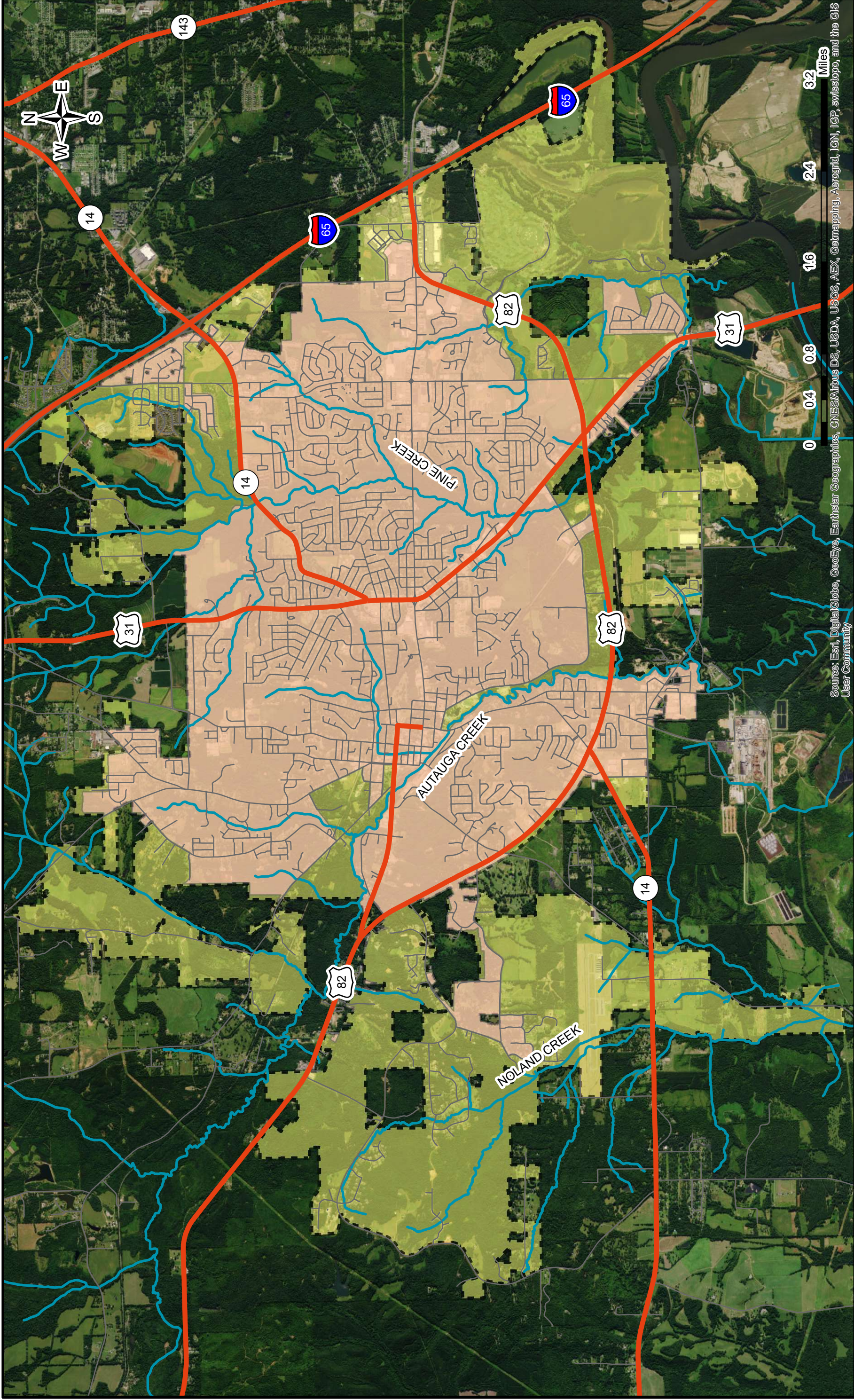
## 10.0 Certification

I certify under penalty of law that this document and all attachments were prepared under my direction or supervision in accordance with a system designed to assure that qualified personnel properly gathered and evaluated the information submitted. Based on my inquiry of the person or persons who manage the system, or those persons directly responsible for gathering the information, the information is, to the best of my knowledge and belief, true, accurate, and complete. I am aware that there are significant penalties for submitting false information, including the possibility of fine or imprisonment for knowing violations.

\_\_\_\_\_  
Bill Gillespie, Jr.  
Mayor

January 31, 2017

## **Appendix A**



Source: Esri, DigitalGlobe, GeoEye, Earthstar Geographics, CNES/Airbus DS, USDA, USGS, AEX, Getmapping, Aerogrid, IGN, IGP, swisstopo, and the GIS User Community



- Prattville City Limits — Streets — ALDOT Roads
- Prattville MS4 Area — Streams



**CITY OF PRATTVILLE**

City of Prattville MS4

Figure 2-2

January 2017

## **Appendix B**



**Table 4-1  
Public Education and Public Involvement Goals**

| Program Component                             | BMP                            |  | Frequency       | Schedule          | Responsible Department |
|---|--------------------------------|--|-----------------|-------------------|------------------------|
|   | Description                    |  |                 |                   |                        |
| Public Education<br>(Minimum of one / year)   | Local Partnerships             |  | Track           | 30 September 2017 |                        |
|   | Website                        |  | Develop         | 30 September 2017 |                        |
|   | Public Service Announcements   |  | Track           | 30 September 2017 |                        |
|   | Brochures                      |  | 1 / year        | 30 September 2017 |                        |
|   | Workshops                      |  | Track           | 30 September 2017 |                        |
|   | Training                       |  | Track           | 30 September 2017 |                        |
|   | Citizen Reporting Tools        |  | Track           | 30 September 2017 |                        |
|   | Recycling                      |  | Track           | 30 September 2017 |                        |
|   | Pet Waste Stations             |  | Track           | 30 September 2017 |                        |
|   | Clean-up Events                |  | Track           | 30 September 2017 |                        |
| Public Involvement<br>(Minimum of one / year) | Storm Drain Marking            |  | Develop / Track | 30 September 2017 |                        |
|   | Public Events                  |  | Track           | 30 September 2017 |                        |
|   | Evaluate Program Effectiveness |  | 1 / year        | 30 September 2017 |                        |
|   |                                |  |                 |                   |                        |
|   |                                |  |                 |                   |                        |
|   |                                |  |                 |                   |                        |
|   |                                |  |                 |                   |                        |
|   |                                |  |                 |                   |                        |
|   |                                |  |                 |                   |                        |
|   |                                |  |                 |                   |                        |
| Program Evaluation                            |                                |  |                 |                   |                        |



**Table 5-4  
 Illicit Discharge Detection and Elimination Goals**

| Program Component  | BMP  |  | Frequency                | Schedule          | Responsible Department |
|--------------------|--|--|--------------------------|-------------------|------------------------|
|                    | Description  |  |                          |                   |                        |
| Legal Authority    | Illicit Discharge Detection and Elimination (IDDE) Ordinance   |  | Develop                  | 1 January 2018    |                        |
|                    |  |  | Adopt                    | 1 July 2018       |                        |
| Outfall Inventory  | Mapping and Screening Schedule<br>Outfall Screening Inspection Form<br>Outfall Map<br>Outfall Mapping and Screening                          |  | Update as needed         | 30 September 2017 |                        |
|                    |  |  | Update as needed         | 30 September 2017 |                        |
|                    |  |  | Annually                 | 30 September 2017 |                        |
|                    |  |  | Each Outfall 1 / 5 years | 30 September 2021 |                        |
|                    |  |  |                          |                   |                        |
| Illicit Discharges | Citizen Reporting Tools<br>Inspection Form<br>Source Tracing Procedures<br>ADEM Notification Procedures<br>Mitigation Procedures<br>Training |  | Develop                  | 1 July 2017       |                        |
|                    |  |  | Update as needed         | 30 September 2017 |                        |
|                    |  |  | Update as needed         | 30 September 2017 |                        |
|                    |  |  | Develop                  | 1 July 2017       |                        |
|                    |  |  | Develop                  | 1 January 2018    |                        |
|                    |  |  | Develop                  | 1 July 2017       |                        |
|                    |  |  | Implement                | 1 January 2017    |                        |
|                    |  |  | Annually                 | 30 September 2017 |                        |
|                    |  |  |                          |                   |                        |
|                    |  |  |                          |                   |                        |
| Program Evaluation | Evaluate Program Effectiveness   |  | Annually                 | 30 September 2017 |                        |
|                    |  |  |                          |                   |                        |
|                    |  |  |                          |                   |                        |
|                    |  |  |                          |                   |                        |
|                    |  |  |                          |                   |                        |





**Table 6-1  
Construction Site Runoff Goals**

| Program Component   | BMP  |                                       | Frequency | Schedule          | Responsible Department |
|---------------------|--|---------------------------------------|-----------|-------------------|------------------------|
|                     | Description  |                                       |           |                   |                        |
| Legal Authority     | Erosion and Sediment Control (ESC) Ordinance                     |                                       | Develop   | 1 January 2018    |                        |
|                     |  |                                       | Adopt     | 1 July 2018       |                        |
| Permitting          | Permit Application Requirements                                  |                                       | Develop   | 1 January 2018    |                        |
|                     |  | Permits Issued                        | Track     | 1 July 2018       |                        |
| Plan Review         | Construction Best Management Practices Plan (CBMPP) Requirements |                                       | Develop   | 1 January 2018    |                        |
|                     |  | CBMPP Review Checklist and Procedures | Develop   | 1 January 2018    |                        |
| Inspections         | Inspection Requirements  |                                       | Track     | 1 July 2018       |                        |
|                     |  | Inspections                           | Develop   | 1 January 2018    |                        |
| Enforcement Actions | Enforcement Strategy   |                                       | Develop   | 1 July 2018       |                        |
|                     |  | Enforcement Tracking System           | Develop   | 1 January 2018    |                        |
|                     | Enforcement Actions  |                                       | Track     | 1 July 2018       |                        |
|                     |  | Citizen Reporting Tools               | Develop   | 1 July 2017       |                        |
| Training            | ADEM Notification Procedures                                     |                                       | Develop   | 1 July 2017       |                        |
|                     |  | QCI Training                          | 1 / year  | 1 July 2017       |                        |
| Program Evaluation  | Evaluate Program Effectiveness                                   |                                       | 1 / year  | 30 September 2017 |                        |
|                     |  |                                       |           |                   |                        |
|                     |  |                                       |           |                   |                        |
|                     |  |                                       |           |                   |                        |
|                     |  |                                       |           |                   |                        |
|                     |  |                                       |           |                   |                        |







**Table 7-1  
Post Construction Storm Water Management Goals**

| Program Component      | BMP  |  | Frequency | Schedule          | Responsible Department |
|------------------------|--|--|-----------|-------------------|------------------------|
|                        | Description  |  |           |                   |                        |
| Legal Authority        | Post Construction Stormwater Management<br>New Ordinance or Modify Existing Ordinances                         |  | Develop   | 1 January 2018    |                        |
|                        |  |  | Adopt     | 1 July 2018       |                        |
| Permitting             | Low Impact Development<br>Permit Application Requirements<br>Permits Issued                                    |  | Encourage | 1 July 2018       |                        |
|                        |  |  | Develop   | 1 January 2018    |                        |
|                        |  |  | Track     | 1 July 2018       |                        |
| Plan Review            | Post Construction Stormwater Management Requirements<br>Plan Review Checklist and Procedures<br>Plans Reviewed |  | Develop   | 1 January 2018    |                        |
|                        |  |  | Develop   | 1 January 2018    |                        |
|                        |  |  | Track     | 1 July 2018       |                        |
| Post Construction BMPs | As-Built Certification Requirements<br>As-Built Certifications<br>Post Construction BMP Inventory              |  | Develop   | 1 January 2018    |                        |
|                        |  |  | Track     | 1 July 2018       |                        |
|                        |  |  | Track     | 1 July 2018       |                        |
| Maintenance            | Maintenance Requirements<br>Maintenance Activities   |  | Develop   | 1 January 2018    |                        |
|                        |  |  | Track     | 1 July 2018       |                        |
| Program Evaluation     | Evaluate Program Effectiveness   |  | Annually  | 30 September 2017 |                        |
|                        |  |  |           |                   |                        |
|                        |  |  |           |                   |                        |
|                        |  |  |           |                   |                        |
|                        |  |  |           |                   |                        |



**Table 8-4  
Pollution Prevention / Good Housekeeping – Program Goals**

| Program Component                            | BMP                                  |  | Frequency | Schedule          | Responsible Department |
|--|--------------------------------------|--|-----------|-------------------|------------------------|
|  | Description                          |  |           |                   |                        |
| Municipal Facilities                         | Inventory                            |  | Develop   | 1 July 2017       |                        |
|  | Inspection Requirements              |  | Develop   | 1 July 2017       |                        |
|  | Standard Operating Procedures (SOPs) |  | Develop   | 1 July 2017       |                        |
|  | Training Requirements                |  | Develop   | 1 July 2017       |                        |
|  | Inventory                            |  | Develop   | 1 July 2017       |                        |
| Roads  | Maintenance                          |  | Track     | 30 September 2017 |                        |
|  | Litter Control                       |  | Track     | 30 September 2017 |                        |
|  | Street Sweeping                      |  | Track     | 30 September 2017 |                        |
|  | Deicing Events                       |  | Track     | 30 September 2017 |                        |
|  | PHF Storage Facility Inventory       |  | Develop   | 1 July 2017       |                        |
| Pesticides, Herbicides and Fertilizers (PHF) | Training                             |  | Develop   | 1 July 2017       |                        |
|  | Standard Operating Procedures (SOPs) |  | Develop   | 1 July 2017       |                        |
|  | Chemical Inventory                   |  | Track     | 30 September 2017 |                        |
|  | Chemical Application                 |  | Track     | 30 September 2017 |                        |
|  | Evaluate Program Effectiveness       |  | Annual    | 30 September 2017 |                        |
| Program Evaluation                           |                                      |  |           |                   |                        |
|  |                                      |  |           |                   |                        |
|  |                                      |  |           |                   |                        |
|  |                                      |  |           |                   |                        |